



 the
malvern
collection

Price List

Garden Studios
2023

**HANDMADE IN WORCESTERSHIRE
FOR OVER 50 YEARS**

contents

3	Welcome to the Malvern Collection
4-7	Studio Pavilion
8-11	Studio Flat
12-15	Studio Retreat
16-19	Studio Hipped
20-23	Studio Pent
24-27	Studio Apex
28-29	Studio Corner
30	Glossary of Terms
31	Important Points to Note

welcome to

the malvern collection

HANDMADE IN WORCESTERSHIRE FOR OVER 50 YEARS

In the early 1970s, we started to design and produce garden buildings at our factory in Worcestershire. All of our buildings are made to order and handcrafted using traditional carpentry techniques by skilled craftsmen, which are then delivered and installed by our own teams of experienced fitters across the country.

The Malvern Collection design and make a wide collection of buildings, from the humble shed right through to fully lined, insulated and double glazed garden rooms and offices designed for all year round use.

We offer a wide selection of optional extras which enable you to create your ideal garden room to meet not only your practical needs but also your own personal taste.

Our paint spraying shop is one of the most advanced spraying and drying facilities in the garden building industry, where buildings can be coated with a highly durable and weather resistant, low maintenance paint and primer system, which will protect and enhance your building.

At Malvern, we use only the highest quality materials from sustainable sources. Our redwood buildings are constructed using kiln dried slow grown pine from Sweden's Northern sawmills and our cedar buildings are constructed using Canadian Western Red kiln dried cedar.

We strongly recommend that you visit one of our display sites where you can examine for yourself the quality, design and materials used in the manufacture of our buildings. Experienced staff will be on hand to discuss your individual requirements.

Standard Features

- Double glazed units with 4mm toughened glass both sides and 8mm cavity
- Double doors with fixed windows in the front and two opening vented windows, one in each side
- Supplied with either full length, three quarter length or half length windows. Must be specified on order
- Chrome ironmongery
- Five lever mortice lock
- Lockable windows and doors
- Heavy duty polyester mineral felt - available in green, black or red
- Tongue & groove timber roof and floor
- Pressure treated floor joists
- High quality timber treatment applied throughout prior to delivery (excluding pressure treated)
- A wide range of sizes to choose from

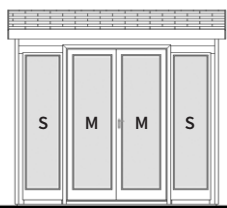
Options

- A choice of Redwood, Heavy Duty Redwood, Heavy Duty Pressure Treated, Heavy Duty Redwood Barnstyle, Heavy Duty Pressure Treated Barnstyle or Western Red Cedar tongue and groove cladding types
- Higher pitched roof
- Coloured painted finish – a wide selection of colours to choose from
- Tongue and groove timber lining and insulation
- Painted MDF lining and insulation
- Heavy duty floor
- Laminate floor – a wide selection to choose from
- Integral open sided area
- Composite decking upgrade to open area
- Brass or black ironmongery
- Additional windows and doors
- Privacy style vent windows
- Internal partition walls can be added to create an additional room which can be accessed via external shed style doors and/or internal doors
- Tinted glass
- Pressure treated slatted roof
- Slate effect tiled roof - a choice of three colours available
- Cedar slatted roof
- Pressure treated cedar shingle roof
- Bitumen mineral felt tiles – a choice of three colours available
- Guttering and downpipe (dependant on roof finish) available in black, brown and white
- A set of pressure treated floor bearers

Front Window and Door Configurations

The drawings below show our standard layout with double doors centred and glazing to the front with small, medium, large and extra large windows.

These layouts can be altered to suit your own individual requirements.



2.44m (8') front with 1.22m double doors



3.05m (10') front with 1.22m double doors



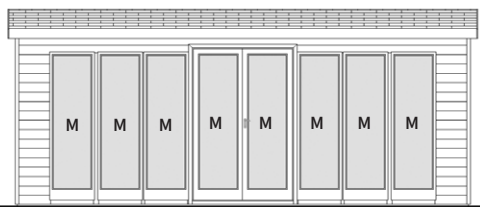
3.66m (12') front with 1.22m double doors



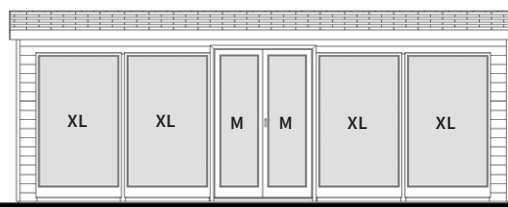
4.27m (14') front with 1.22m double doors



4.88m (16') front with 1.22m double doors



5.49m (18') front with 1.22m double doors



6.10m (20') front with 1.22m double doors



6.71m (22') front with 1.22m double doors



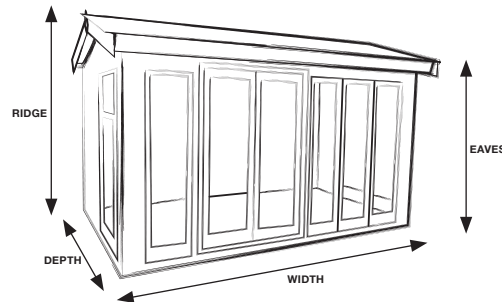
7.32m (24') front with 1.22m double doors



7.93m (26') front with 1.22m double doors

Size w x d (m)	Size w x d (ft)	Standard Redwood	Heavy Duty Redwood	Heavy Duty Pressure Treated	Heavy Duty Redwood Barnstyle	Heavy Duty Pressure Treated Barnstyle	Standard Cedar	Coloured Painted Finish	Tongue & Groove Lining & Insulation
2.44 x 1.83	8' x 6'	5,015	5,740	6,315	5,740	6,315	7,885	1,575	1,630
3.05 x 1.83	10' x 6'	5,740	6,540	7,195	6,540	7,195	9,020	1,780	1,910
3.66 x 1.83	12' x 6'	6,450	7,335	8,070	7,335	8,070	10,260	1,970	2,205
4.27 x 1.83	14' x 6'	7,175	8,275	9,105	8,275	9,105	11,625	2,200	2,445
4.88 x 1.83	16' x 6'	7,990	9,100	10,010	9,100	10,010	12,860	2,440	2,700
2.44 x 2.44	8' x 8'	5,405	6,200	6,820	6,200	6,820	9,020	1,825	1,960
3.05 x 2.44	10' x 8'	6,275	7,175	7,895	7,175	7,895	10,600	2,025	2,270
3.66 x 2.44	12' x 8'	7,060	8,065	8,870	8,065	8,870	11,935	2,230	2,540
4.27 x 2.44	14' x 8'	7,955	9,055	9,960	9,055	9,960	13,135	2,420	2,845
4.88 x 2.44	16' x 8'	8,740	10,005	11,005	10,005	11,005	14,925	2,605	3,145
5.49 x 2.44	18' x 8'	9,565	10,990	12,090	10,990	12,090	16,380	2,815	3,420
6.10 x 2.44	20' x 8'	10,405	11,930	13,125	11,930	13,125	17,775	3,030	3,700
6.71 x 2.44	22' x 8'	11,225	12,875	14,165	12,875	14,165	19,170	3,250	3,970
7.32 x 2.44	24' x 8'	12,065	13,830	15,215	13,830	15,215	20,600	3,460	4,240
3.05 x 3.05	10' x 10'	7,070	8,100	8,910	8,100	8,910	12,170	2,325	2,610
3.66 x 3.05	12' x 10'	8,030	9,150	10,065	9,150	10,065	13,600	2,480	2,915
4.27 x 3.05	14' x 10'	8,740	10,005	11,005	10,005	11,005	15,230	2,685	3,385
4.88 x 3.05	16' x 10'	9,475	10,820	11,900	10,820	11,900	16,815	2,890	3,540
5.49 x 3.05	18' x 10'	10,535	12,075	13,285	12,075	13,285	18,445	3,190	3,805
6.10 x 3.05	20' x 10'	11,405	13,055	14,360	13,055	14,360	20,040	3,430	4,035
6.71 x 3.05	22' x 10'	12,285	14,085	15,495	14,085	15,495	21,640	3,680	4,295
7.32 x 3.05	24' x 10'	13,185	15,120	16,630	15,120	16,630	23,240	3,910	4,585
7.93 x 3.05	26' x 10'	14,080	16,155	17,770	16,155	17,770	24,835	4,130	4,870
3.66 x 3.66	12' x 12'	8,885	10,175	11,195	10,175	11,195	14,975	2,725	3,385
4.27 x 3.66	14' x 12'	9,840	11,200	12,320	11,200	12,320	16,815	2,945	3,585
4.88 x 3.66	16' x 12'	10,870	12,505	13,755	12,505	13,755	18,610	3,190	3,960
5.49 x 3.66	18' x 12'	11,720	13,440	14,785	13,440	14,785	20,290	3,430	4,295
6.10 x 3.66	20' x 12'	12,750	14,620	16,080	14,620	16,080	22,185	3,705	4,610
6.71 x 3.66	22' x 12'	13,730	15,750	17,325	15,750	17,325	23,990	3,945	4,950
7.32 x 3.66	24' x 12'	14,765	16,940	18,635	16,940	18,635	25,785	4,180	5,295
7.93 x 3.66	26' x 12'	15,800	18,120	19,930	18,120	19,930	27,575	4,405	5,630

FOR HIGH PITCH VERSION - ADD 10% TO BUILDING AND ANY ADDITIONAL ROOF OPTION



STUDIO PAVILION					
	External Height (m)		Internal Height (Unlined) (m)		
Building Depth (m)	Ridge		Eaves	Ridge	
	Low	High		Low	High
1.83	2.33	2.51	2.04	2.20	2.37
2.44	2.41	2.65		2.29	2.51
3.05	2.40	2.79		2.29	2.65
3.66	2.47	2.93		2.35	2.80
					2.02

Painted MDF Lining & Insulation	Tinted Glass	Bitumen Felt Tiles	Pressure Treated Slatted Roof	Cedar Slatted Roof	Cedar Shingle Roof	Slate Effect Tiled Roof	Heavy Duty Floor	Floor Bearers	Laminate Floor	Installation
2,990	505	595	675	1,290	1,730	1,730	160	120	640	320
3,430	610	740	820	1,625	2,155	2,155	195	130	800	405
3,850	645	900	980	1,955	2,570	2,570	240	135	950	465
4,305	715	1,030	1,140	2,265	2,985	2,985	280	140	1,115	525
4,890	785	1,200	1,315	2,570	3,415	3,415	325	150	1,275	600
3,530	505	760	810	1,570	2,065	2,065	215	140	850	465
4,065	610	940	980	1,985	2,565	2,565	270	150	1,070	535
4,570	645	1,115	1,140	2,340	3,075	3,075	325	170	1,275	610
5,220	715	1,280	1,330	2,720	3,570	3,570	365	200	1,490	700
5,595	785	1,435	1,560	3,090	4,075	4,075	430	220	1,710	980
6,125	850	1,665	1,780	3,490	4,570	4,570	480	245	1,920	1,085
6,650	945	1,835	1,885	3,885	5,070	5,070	525	270	2,135	1,220
7,155	1,015	2,045	2,075	4,290	5,580	5,580	575	300	2,345	1,340
7,675	1,100	2,240	2,245	4,690	6,075	6,075	625	320	2,565	1,470
4,665	610	1,115	1,140	2,295	2,955	2,955	330	200	1,325	765
5,160	645	1,315	1,365	2,785	3,535	3,535	385	220	1,600	845
5,785	715	1,520	1,560	3,055	4,120	4,120	465	245	1,875	995
6,330	785	1,740	1,795	3,535	4,695	4,695	525	270	2,135	1,130
6,885	850	1,960	2,015	3,980	5,270	5,270	600	290	2,410	1,290
7,260	945	2,160	2,235	4,405	5,850	5,850	655	320	2,660	1,455
7,785	1,015	2,385	2,455	4,830	6,440	6,440	720	340	2,920	1,610
8,300	1,100	2,610	2,685	5,245	7,015	7,015	790	360	3,180	1,790
8,815	1,175	2,835	2,905	5,645	7,590	7,590	865	385	3,445	1,965
5,785	645	1,575	1,560	3,055	4,250	4,250	480	255	1,920	1,020
6,505	715	1,790	1,825	3,565	4,670	4,670	555	280	2,240	1,155
7,095	785	2,035	2,100	4,025	5,335	5,335	640	320	2,560	1,290
7,720	850	2,255	2,420	4,500	6,000	6,000	705	340	2,875	1,390
8,300	945	2,500	2,685	5,020	6,660	6,660	800	365	3,185	1,535
8,905	1,015	2,745	2,965	5,505	7,320	7,320	875	395	3,505	1,675
9,505	1,100	2,980	3,255	5,995	7,970	7,970	970	425	3,820	1,800
10,110	1,175	3,220	3,540	6,480	8,620	8,620	1,060	450	4,135	1,920

Additional Windows and Doors

	Redwood		Pressure Treated		Cedar	
	Plain	Tinted	Plain	Tinted	Plain	Tinted
0.31m (12") Extra Small Fixed Window	360	450	415	505	535	625
0.46m (18") Small Fixed Window	360	450	415	505	535	625
0.46m (18") Small Vented Window	460	570	530	640	665	775
0.52m (20½") Medium Fixed Window	395	485	455	545	580	670
0.52m (20½") Medium Vented Window	495	605	570	680	710	820
0.77m (30") Large Fixed Window	535	645	615	725	715	835
0.77m (30") Large Vented Window	635	765	730	860	845	980
1.04m (41") Extra Large Fixed Window	675	805	775	905	920	1,050
1.04m (41") Extra Large Vented Window	775	925	890	1,040	1,050	1,200
1.83m (6') Gable End High Level Window	245	295	280	330	385	455
2.44m (8') Gable End High Level Window	295	365	340	410	460	530
3.05m (10') & 3.66m (12') Gable End High Level Window	395	485	455	525	580	670
0.71m (28") Privacy Window	210	235	250	285	255	290
Additional Single Door	750	855	905	1,030	1,095	1,195
Additional Double Door	1,510	1,670	1,765	1,930	2,085	2,240
0.89m (35") Malvern Opening Window Single Glazed	160	210	165	215	220	270
0.89m (35") Malvern Fixed Window Single Glazed	115	165	120	170	175	225
0.89m (35") Malvern Opening Window Double Glazed	275	325	285	335	340	390
0.89m (35") Malvern Fixed Window Double Glazed	230	280	240	290	295	345

	Redwood	Pressure Treated	Cedar
1.83m (6') Partition	280	330	655
2.44m (8') Partition	395	455	905
3.05m (10') Partition	585	675	1,255
3.66m (12') Partition	740	845	1,580

External Shed Door	350	380	525
Internal Solid Door	405		

0.23m (9") Wide Shelf	65	per running metre
0.38m (15") Wide Shelf	80	per running metre
0.38m (15") Wide Workbench	80	per running metre
0.61m (24") Wide Workbench	100	per running metre
Composite Decking Upgrade	270	per sq metre
Guttering	65	per running metre

Standard Features

- Double glazed units with 4mm toughened glass both sides and 8mm cavity
- Double doors with fixed windows in the front and two opening vented windows, one in each side
- Supplied with either full length, three quarter length or half length windows.
- Must be specified on order
- Chrome ironmongery
- Five lever mortice lock
- Lockable windows and doors
- 0.35m roof overhang to front
- EPDM rubber roof
- Tongue & groove timber roof & floor
- Pressure treated floor joists
- High quality timber treatment applied throughout prior to delivery (excluding pressure treated)
- A wide range of sizes to choose from

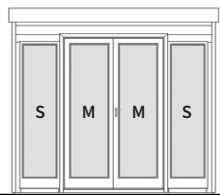
Options

- A choice of Redwood, Heavy Duty Redwood, Heavy Duty Pressure Treated, Heavy Duty Redwood Barnstyle, Heavy Duty Pressure Treated Barnstyle or Western Red Cedar tongue and groove cladding types
- Coloured painted finish - a wide selection of colours to choose from
- Tongue and groove timber lining and insulation
- Painted MDF lining and insulation
- Heavy duty floor
- Laminate floor - a wide selection to choose from
- Integral open sided area
- Composite decking upgrade to open area
- Brass or black ironmongery
- Additional windows
- Privacy style vent windows
- Internal partition walls can be added to create an additional room which can be accessed via external shed style doors and/or internal doors
- Tinted glass
- Guttering and downpipe to the rear available in black, brown and white
- A set of pressure treated floor bearers

Front Window and Door Configurations

The drawings below show our standard layout with double doors centred and glazing to the front with small, medium, large and extra large windows.

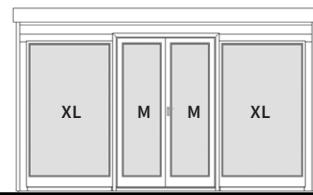
These layouts can be altered to suit your own individual requirements.



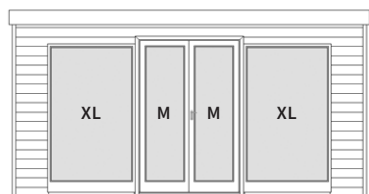
2.44m (8') front with 1.22m double doors



3.05m (10') front with 1.22m double doors



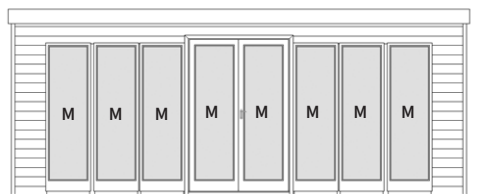
3.66m (12') front with 1.22m double doors



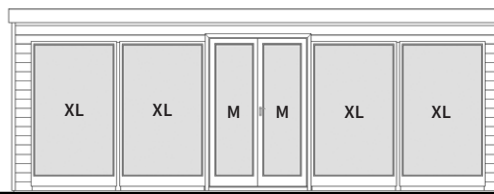
4.27m (14') front with 1.22m double doors



4.88m (16') front with 1.22m double doors



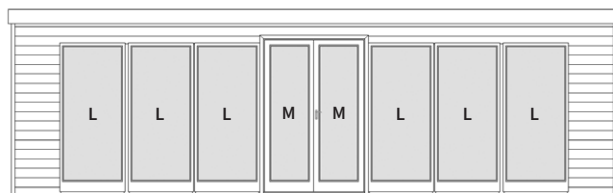
5.49m (18') front with 1.22m double doors



6.10m (20') front with 1.22m double doors



6.71m (22') front with 1.22m double doors

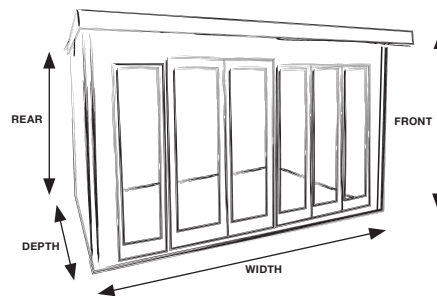


7.32m (24') front with 1.22m double doors



7.93m (26') front with 1.22m double doors

Size w x d (m)	Size w x d (ft)	Standard Redwood	Heavy Duty Redwood	Heavy Duty Pressure Treated	Heavy Duty Redwood Barnstyle	Heavy Duty Pressure Treated Barnstyle	Standard Cedar
2.44 x 1.83	8' x 6'	5,875	6,600	7,260	6,600	7,260	8,745
3.05 x 1.83	10' x 6'	6,760	7,560	8,315	7,560	8,315	10,040
3.66 x 1.83	12' x 6'	7,620	8,505	9,355	8,505	9,355	11,430
4.27 x 1.83	14' x 6'	8,515	9,615	10,575	9,615	10,575	12,965
4.88 x 1.83	16' x 6'	9,500	10,610	11,670	10,610	11,670	14,370
2.44 x 2.44	8' x 8'	6,420	7,215	7,935	7,215	7,935	10,035
3.05 x 2.44	10' x 8'	7,500	8,400	9,240	8,400	9,240	11,825
3.66 x 2.44	12' x 8'	8,475	9,480	10,430	9,480	10,430	13,350
4.27 x 2.44	14' x 8'	9,575	10,675	11,745	10,675	11,745	14,755
4.88 x 2.44	16' x 8'	10,565	11,830	13,015	11,830	13,015	16,750
5.49 x 2.44	18' x 8'	11,580	13,005	14,305	13,005	14,305	18,395
6.10 x 2.44	20' x 8'	12,625	14,150	15,565	14,150	15,565	19,995
6.71 x 2.44	22' x 8'	13,655	15,305	16,835	15,305	16,835	21,600
7.32 x 2.44	24' x 8'	14,690	16,455	18,100	16,455	18,100	23,225
3.05 x 3.05	10' x 10'	8,515	9,545	10,500	9,545	10,500	13,615
3.66 x 3.05	12' x 10'	9,725	10,845	11,930	10,845	11,930	15,295
4.27 x 3.05	14' x 10'	10,650	11,915	13,105	11,915	13,105	17,140
4.88 x 3.05	16' x 10'	11,605	12,950	14,245	12,950	14,245	18,945
5.49 x 3.05	18' x 10'	12,925	14,465	15,910	14,465	15,910	20,835
6.10 x 3.05	20' x 10'	14,030	15,680	17,250	15,680	17,250	22,665
6.71 x 3.05	22' x 10'	15,150	16,950	18,645	16,950	18,645	24,505
7.32 x 3.05	24' x 10'	16,295	18,230	20,055	18,230	20,055	26,350
7.93 x 3.05	26' x 10'	17,340	19,420	21,360	19,420	21,360	28,010



STUDIO FLAT				
Building Depth (m)	External Height (m)		Internal Height (Unlined) (m)	
	Front	Rear	Front	Rear
1.83	2.26	2.20	2.06	2.06
2.44	2.26	2.20		
3.05	2.28	2.22		

Coloured Painted Finish	Tongue & Groove Lining & Insulation	Painted MDF Lining & Insulation	Tinted Glass	Heavy Duty Floor	Floor Bearers	Laminate Floor	Installation
1,575	1,630	2,990	505	160	120	640	380
1,780	1,910	3,430	610	195	130	800	480
1,970	2,205	3,850	645	240	135	950	560
2,200	2,445	4,305	715	280	140	1,115	640
2,440	2,700	4,890	785	325	150	1,275	720
1,825	1,960	3,530	505	215	140	850	560
2,025	2,270	4,065	610	270	150	1,070	645
2,230	2,540	4,570	645	325	170	1,275	735
2,420	2,845	5,220	715	365	200	1,490	840
2,605	3,145	5,595	785	430	220	1,710	1,175
2,815	3,420	6,125	850	480	245	1,920	1,305
3,030	3,700	6,650	945	525	270	2,135	1,465
3,250	3,970	7,155	1,015	575	300	2,345	1,605
3,460	4,240	7,675	1,100	625	320	2,565	1,770
2,325	2,610	4,665	610	330	200	1,325	925
2,480	2,915	5,160	645	385	220	1,600	1,015
2,685	3,385	5,785	715	465	245	1,875	1,200
2,890	3,540	6,330	785	525	270	2,135	1,355
3,190	3,805	6,885	850	600	290	2,410	1,550
3,430	4,035	7,260	945	655	320	2,660	1,740
3,680	4,295	7,785	1,015	720	340	2,920	1,935
3,910	4,585	8,300	1,100	790	360	3,180	2,150
4,130	4,870	8,815	1,175	865	385	3,445	2,365

Additional Windows and Doors

	Redwood		Pressure Treated		Cedar	
	Plain	Tinted	Plain	Tinted	Plain	Tinted
0.31m (12") Extra Small Fixed Window	360	450	415	505	535	625
0.46m (18") Small Fixed Window	360	450	415	505	535	625
0.46m (18") Small Vented Window	460	570	530	640	665	775
0.52m (20½") Medium Fixed Window	395	485	455	545	580	670
0.52m (20½") Medium Vented Window	495	605	570	680	710	820
0.77m (30") Large Fixed Window	535	645	615	725	715	835
0.77m (30") Large Vented Window	635	765	730	860	845	980
1.04m (41") Extra Large Fixed Window	675	805	775	905	920	1,050
1.04m (41") Extra Large Vented Window	775	925	890	1,040	1,050	1,200
0.71m (28") Privacy Window	210	235	250	285	255	290
Additional Single Door	750	855	905	1,030	1,095	1,195
Additional Double Door	1,510	1,670	1,765	1,930	2,085	2,240
0.89m (35") Malvern Opening Window Single Glazed	160	210	165	215	220	270
0.89m (35") Malvern Fixed Window Single Glazed	115	165	120	170	175	225
0.89m (35") Malvern Opening Window Double Glazed	275	325	285	335	340	390
0.89m (35") Malvern Fixed Window Double Glazed	230	280	240	290	295	345

	Redwood	Pressure Treated	Cedar
1.83m (6') Partition	280	330	655
2.44m (8') Partition	395	455	905
3.05m (10') Partition	585	675	1,255
External Shed Door	350	380	525
Internal Solid Door	405		
0.23m (9") Wide Shelf	65	per running metre	
0.38m (15") Wide Shelf	80	per running metre	
0.38m (15") Wide Workbench	80	per running metre	
0.61m (24") Wide Workbench	100	per running metre	
Composite Decking Upgrade	270	per sq metre	
Guttering	65	per running metre	

Standard Features

- Double glazed units with 4mm glass both sides and 8mm cavity
- Double doors with fixed windows in the front (excluding 2.44m and 3.05m front) and two opening vented windows, one in each side
- Supplied with either full length, three quarter length or half length windows. Must be specified on order
- Chrome ironmongery
- Five lever mortice lock
- Lockable windows and doors
- Timber decking floor in recessed porch area
- EPDM rubber roof
- Tongue & groove timber roof & floor
- Pressure treated floor joists
- High quality timber treatment applied throughout prior to delivery (excluding pressure treated)
- A wide range of sizes to choose from

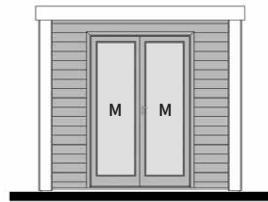
Options

- A choice of Redwood, Heavy Duty Redwood, Heavy Duty Pressure Treated, Heavy Duty Redwood Barnstyle, Heavy Duty Pressure Treated Barnstyle or Western Red Cedar tongue and groove cladding types
- Coloured painted finish - a wide selection of colours to choose from
- Tongue and groove timber lining and insulation
- Painted MDF lining and insulation
- Heavy duty floor
- Laminate floor - a wide selection to choose from
- Composite decking upgrade to recessed porch area floor
- Brass or black ironmongery
- Additional windows
- Privacy style vent windows
- Internal partition walls can be added to create an additional room which can be accessed via external shed style doors and/or internal doors
- Tinted glass
- Guttering and downpipe to the rear available in black, brown and white
- A set of pressure treated floor bearers

Front Window and Door Configurations

The drawings below show our standard layout with double doors centred and glazing to the front with small, medium, large and extra large windows.

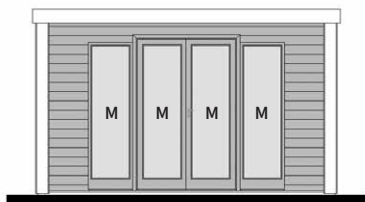
These layouts can be altered to suit your own individual requirements.



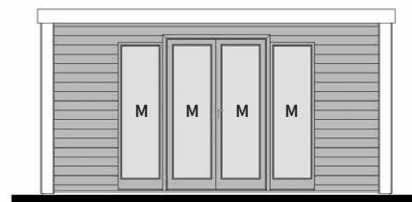
2.44m (8') front with 1.22m double doors



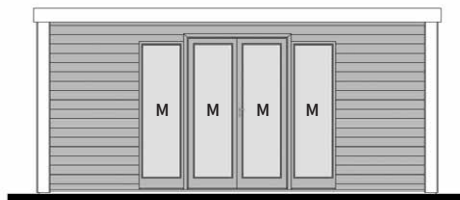
3.05m (10') front with 1.22m double doors



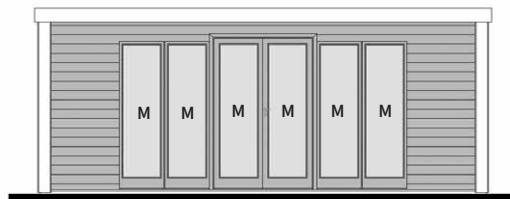
3.66m (12') front with 1.22m double doors



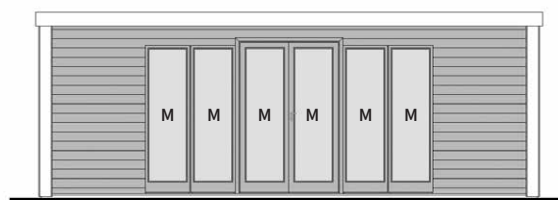
4.27m (14') front with 1.22m double doors



4.88m (16') front with 1.22m double doors

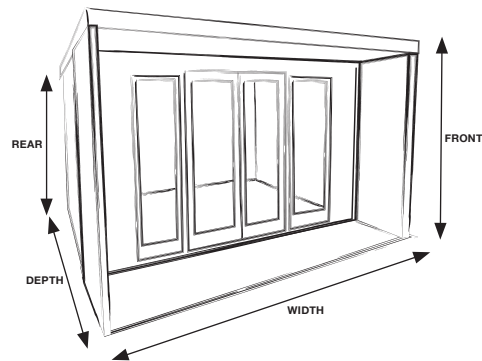


5.49m (18') front with 1.22m double doors



6.10m (20') front with 1.22m double doors

Size w x d (m)	Size w x d (ft)	Standard Redwood	Heavy Duty Redwood	Heavy Duty Pressure Treated	Heavy Duty Redwood Barnstyle	Heavy Duty Pressure Treated Barnstyle	Standard Cedar
2.44 x 2.44	8' x 8'	6,570	7,350	8,085	7,350	8,085	10,445
3.05 x 2.44	10' x 8'	7,525	8,385	9,225	8,385	9,225	11,830
3.66 x 2.44	12' x 8'	8,455	9,400	10,340	9,400	10,340	13,315
4.27 x 2.44	14' x 8'	9,425	10,580	11,640	10,580	11,640	14,940
4.88 x 2.44	16' x 8'	10,480	11,650	12,815	11,650	12,815	16,440
2.44 x 3.05	8' x 10'	7,115	7,965	8,760	7,965	8,760	11,735
3.05 x 3.05	10' x 10'	8,265	9,225	10,150	9,225	10,150	13,615
3.66 x 3.05	12' x 10'	9,310	10,375	11,415	10,375	11,415	15,235
4.27 x 3.05	14' x 10'	10,485	11,640	12,805	11,640	12,805	16,730
4.88 x 3.05	16' x 10'	11,545	12,870	14,155	12,870	14,155	18,820
5.49 x 3.05	18' x 10'	12,635	14,115	15,525	14,115	15,525	20,560
6.10 x 3.05	20' x 10'	13,750	15,330	16,865	15,330	16,865	22,250
3.05 x 3.66	10' x 12'	9,280	10,370	11,405	10,370	11,405	15,405
3.66 x 3.66	12' x 12'	10,560	11,740	12,915	11,740	12,915	17,180
4.27 x 3.66	14' x 12'	11,560	12,880	14,170	12,880	14,170	19,115
4.88 x 3.66	16' x 12'	12,585	13,990	15,390	13,990	15,390	21,015
5.49 x 3.66	18' x 12'	13,980	15,575	17,135	15,575	17,135	23,000
6.10 x 3.66	20' x 12'	15,155	16,860	18,545	16,860	18,545	24,920



STUDIO RETREAT				
Building Depth (m)	External Height (m)		Internal Height (Unlined) (m)	
	Front	Rear	Front	Rear
2.44	2.26	2.20	2.06	2.06
3.05	2.26	2.20		
3.66	2.28	2.22		

Coloured Painted Finish	Tongue & Groove Lining & Insulation	Painted MDF Lining & Insulation	Tinted Glass	Heavy Duty Floor	Floor Bearers	Laminate Floor	Installation
1,575	1,630	2,990	450	215	120	640	380
1,780	1,910	3,430	450	270	130	800	480
1,970	2,205	3,850	650	325	135	950	560
2,200	2,445	4,305	650	365	140	1,115	640
2,440	2,700	4,890	650	430	150	1,275	720
1,825	1,960	3,530	450	270	140	850	560
2,025	2,270	4,065	450	330	150	1,070	645
2,230	2,540	4,570	650	385	170	1,275	735
2,420	2,845	5,220	650	465	200	1,490	840
2,605	3,145	5,595	650	525	220	1,710	1,175
2,815	3,420	6,125	850	600	245	1,920	1,305
3,030	3,700	6,650	850	655	270	2,135	1,465
2,325	2,610	4,665	450	385	200	1,325	925
2,480	2,915	5,160	650	480	220	1,600	1,015
2,685	3,385	5,785	650	555	245	1,875	1,200
2,890	3,540	6,330	650	640	270	2,135	1,355
3,190	3,805	6,885	850	705	290	2,410	1,550
3,430	4,035	7,260	850	800	320	2,660	1,740

Additional Windows and Doors

	Redwood		Pressure Treated		Cedar	
	Plain	Tinted	Plain	Tinted	Plain	Tinted
0.31m (12") Extra Small Fixed Window	360	450	415	505	535	625
0.46m (18") Small Fixed Window	360	450	415	505	535	625
0.46m (18") Small Vented Window	460	570	530	640	665	775
0.52m (20½") Medium Fixed Window	395	485	455	545	580	670
0.52m (20½") Medium Vented Window	495	605	570	680	710	820
0.77m (30") Large Fixed Window	535	645	615	725	715	835
0.77m (30") Large Vented Window	635	765	730	860	845	980
1.04m (41") Extra Large Fixed Window	675	805	775	905	920	1,050
1.04m (41") Extra Large Vented Window	775	925	890	1,040	1,050	1,200
0.71m (28") Privacy Window	210	235	250	285	255	290
Additional Single Door	750	855	905	1,030	1,095	1,195
Additional Double Door	1,510	1,670	1,765	1,930	2,085	2,240
0.89m (35") Malvern Opening Window Single Glazed	160	210	165	215	220	270
0.89m (35") Malvern Fixed Window Single Glazed	115	165	120	170	175	225
0.89m (35") Malvern Opening Window Double Glazed	275	325	285	335	340	390
0.89m (35") Malvern Fixed Window Double Glazed	230	280	240	290	295	345

	Redwood	Pressure Treated	Cedar
1.83m (6') Partition	280	330	655
2.44m (8') Partition	395	455	905
3.05m (10') Partition	585	675	1,255

External Shed Door	350	380	525
Internal Solid Door	405		

0.23m (9") Wide Shelf	65	per running metre
0.38m (15") Wide Shelf	80	per running metre
0.38m (15") Wide Workbench	80	per running metre
0.61m (24") Wide Workbench	100	per running metre
Composite Decking Upgrade	270	per sq metre
Guttering	65	per running metre

Standard Features

- Double glazed units with 4mm toughened glass both sides and 8mm cavity
- Double doors with fixed windows in the front and two opening vented windows, one in each side
- Supplied with either full length, three quarter length or half length windows. Must be specified on order
- Chrome ironmongery
- Five lever mortice lock
- Lockable windows and doors
- Heavy duty polyester mineral felt - available in green, black or red
- Tongue & groove timber roof & floor
- Pressure treated floor joists
- High quality timber treatment applied throughout prior to delivery(excluding pressure treated)
- A wide range of sizes to choose from

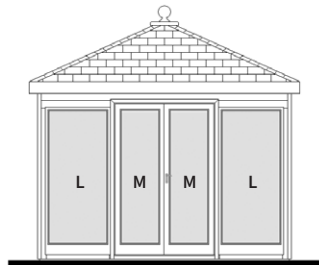
Options

- A choice of Redwood, Heavy Duty Redwood, Heavy Duty Pressure Treated, Heavy Duty Redwood Barnstyle, Heavy Duty Pressure Treated Barnstyle or Western Red Cedar tongue and groove cladding types
- Coloured painted finish - a wide selection of colours to choose from
- Tongue and groove timber lining and insulation
- Painted MDF lining and insulation
- Heavy duty floor
- Laminate floor - a wide selection to choose from
- Brass or black ironmongery
- Additional windows
- Privacy style vent windows
- Tinted glass
- Pressure treated slatted roof
- Slate effect tiled roof - a choice of three colours available
- Cedar slatted roof
- Pressure treated cedar shingle roof
- Bitumen mineral felt tiles - a choice of three colours available
- Guttering and downpipe (dependant on roof finish) available in black, brown and white
- A set of pressure treated floor bearers

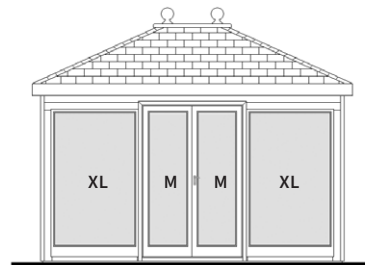
Front Window and Door Configurations

The drawings below show our standard layout with double doors centred and glazing to the front with small, medium, large and extra large windows. Please note, these drawings are based upon the 3.05m (10') deep model and roof configurations change on different depths.

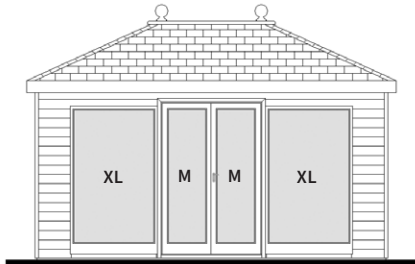
These layouts can be altered to suit your own individual requirements.



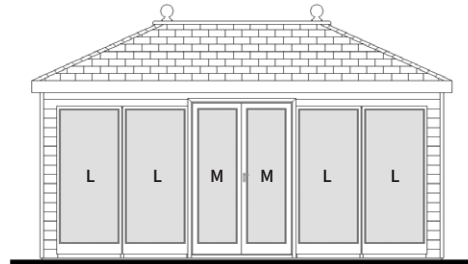
3.05m (10') front with 1.22m double doors



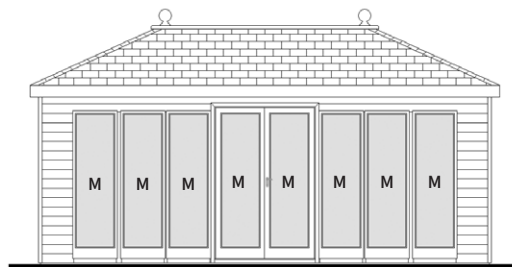
3.66m (12') front with 1.22m double doors



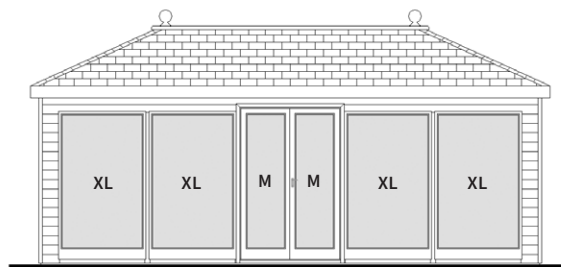
4.27m (14') front with 1.22m double doors



4.88m (16') front with 1.22m double doors

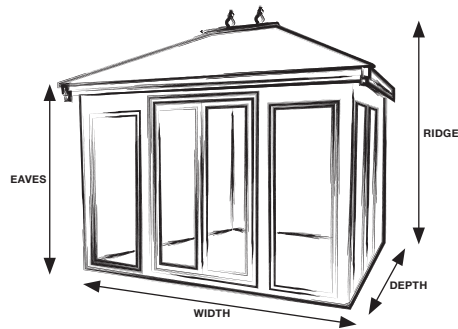


5.49m(18') front with 1.22m double doors



6.10m (20') front with 1.22m double doors

Size w x d (m)	Size w x d (ft)	Standard Redwood	Heavy Duty Redwood	Heavy Duty Pressure Treated	Heavy Duty Redwood Barnstyle	Heavy Duty Pressure Treated Barnstyle	Standard Cedar	Coloured Painted Finish	Tongue & Groove Lining & Insulation
2.44 x 1.83	8' x 6'	5,885	6,615	7,275	6,615	7,275	8,765	1,575	1,750
3.05 x 1.83	10' x 6'	6,830	7,635	8,400	7,635	8,400	10,110	1,780	2,050
3.66 x 1.83	12' x 6'	7,765	8,650	9,515	8,650	9,515	11,580	1,970	2,370
2.44 x 2.44	8' x 8'	6,575	7,360	8,095	7,360	8,095	10,180	1,825	2,110
3.05 x 2.44	10' x 8'	7,720	8,620	9,480	8,620	9,480	12,055	2,025	2,435
3.66 x 2.44	12' x 8'	8,815	9,810	10,790	9,810	10,790	13,685	2,230	2,735
4.27 x 2.44	14' x 8'	10,000	11,095	12,205	11,095	12,205	15,180	2,420	3,055
4.88 x 2.44	16' x 8'	11,065	12,335	13,570	12,335	13,570	17,260	2,605	3,385
3.05 x 3.05	10' x 10'	8,900	9,925	10,920	9,925	10,920	13,995	2,325	2,805
3.66 x 3.05	12' x 10'	10,220	11,340	12,475	11,340	12,475	15,795	2,480	3,135
4.27 x 3.05	14' x 10'	11,285	12,555	13,810	12,555	13,810	17,785	2,685	3,635
4.88 x 3.05	16' x 10'	12,385	13,735	15,110	13,735	15,110	19,730	2,890	3,800
5.49 x 3.05	18' x 10'	13,810	15,350	16,885	15,350	16,885	21,720	3,190	4,095
3.66 x 3.66	12' x 12'	11,950	13,245	14,570	13,245	14,570	18,035	2,725	3,635
4.27 x 3.66	14' x 12'	12,900	14,260	15,685	14,260	15,685	19,880	2,945	3,850
4.88 x 3.66	16' x 12'	14,365	16,000	17,600	16,000	17,600	22,110	3,190	4,270
5.49 x 3.66	18' x 12'	15,660	17,380	19,120	17,380	19,120	24,225	3,430	4,615
6.10 x 3.66	20' x 12'	17,120	18,995	20,895	18,995	20,895	26,560	3,705	4,965



Studio Hipped				
	External Height (m)		Internal Height (m)	
Building Depth (m)	Ridge	Eaves	Ridge	Eaves
1.83	2.74	2.06	2.41	1.91
2.44	2.89		2.56	
3.05	3.05		2.72	
3.66	3.20		2.87	

Painted MDF Lining & Insulation	Tinted Glass	Bitumen Felt Tiles	Pressure Treated Slatted Roof	Cedar Slatted Roof	Cedar Shingle Roof	Slate Effect Tiled Roof	Heavy Duty Floor	Floor Bearers	Laminate Floor	Installation
3,220	505	680	810	1,540	2,080	2,080	160	120	640	355
3,685	610	845	980	1,955	2,575	2,575	195	130	800	440
4,140	645	1,025	1,175	2,335	3,080	3,080	240	135	950	515
3,795	505	860	970	1,880	2,465	2,465	215	140	850	515
4,375	610	1,070	1,175	2,380	3,075	3,075	270	150	1,070	595
4,915	645	1,260	1,365	2,805	3,680	3,680	325	170	1,275	675
5,610	715	1,455	1,585	3,255	4,275	4,275	365	200	1,490	775
6,010	785	1,630	1,870	3,690	4,870	4,870	430	220	1,710	1,085
5,010	610	1,260	1,365	2,750	3,580	3,580	330	200	1,325	845
5,550	645	1,490	1,635	3,325	4,285	4,285	385	220	1,600	930
6,215	715	1,720	1,870	3,665	4,990	4,990	465	245	1,875	1,095
6,805	785	1,970	2,150	4,240	5,700	5,700	525	270	2,135	1,235
7,410	850	2,370	2,420	4,760	6,385	6,385	600	290	2,410	1,425
6,215	645	1,660	1,870	3,665	4,910	4,910	480	255	1,920	1,130
6,995	715	2,035	2,180	4,265	5,720	5,720	555	280	2,240	1,265
7,630	785	2,315	2,420	4,805	6,535	6,535	640	320	2,560	1,415
8,300	850	2,560	2,890	5,390	7,340	7,340	705	340	2,875	1,535
8,920	945	2,835	3,210	6,010	8,145	8,145	800	365	3,185	1,695

Additional Windows and Doors

	Redwood		Pressure Treated		Cedar	
	Plain	Tinted	Plain	Tinted	Plain	Tinted
0.31m (12") Extra Small Fixed Window	360	450	415	505	535	625
0.46m (18") Small Fixed Window	360	450	415	505	535	625
0.46m (18") Small Vented Window	460	570	530	640	665	775
0.52m (20½") Medium Fixed Window	395	485	455	545	580	670
0.52m (20½") Medium Vented Window	495	605	570	680	710	820
0.77m (30") Large Fixed Window	535	645	615	725	715	835
0.77m (30") Large Vented Window	635	765	730	860	845	980
1.04m (41") Extra Large Fixed Window	675	805	775	905	920	1,050
1.04m (41") Extra Large Vented Window	775	925	890	1,040	1,050	1,200
0.71m (28") Privacy Window	210	235	250	285	255	290
Additional Single Door	750	855	905	1,030	1,095	1,195
Additional Double Door	1,510	1,670	1,765	1,930	2,085	2,240
0.89m (35") Malvern Opening Window Single Glazed	160	210	165	215	220	270
0.89m (35") Malvern Fixed Window Single Glazed	115	165	120	170	175	225
0.89m (35") Malvern Opening Window Double Glazed	275	325	285	335	340	390
0.89m (35") Malvern Fixed Window Double Glazed	230	280	240	290	295	345

	Redwood	Pressure Treated	Cedar
1.83m (6') Partition	280	330	655
2.44m (8') Partition	395	455	905
3.05m (10') Partition	585	675	1,255
3.66m (12') Partition	740	845	1,580

External Shed Door	350	380	525
Internal Solid Door	405		

0.23m (9") Wide Shelf	65	per running metre
0.38m (15") Wide Shelf	80	per running metre
0.38m (15") Wide Workbench	80	per running metre
0.61m (24") Wide Workbench	100	per running metre
Composite Decking Upgrade	270	per sq metre
Guttering	65	per running metre

Standard Features

- Double glazed units with 4mm toughened glass both sides and 8mm cavity
- Double doors with fixed windows in the front and two opening vented windows, one in each side
- Supplied with either full length, three quarter length or half length windows. Must be specified on order
- Chrome ironmongery
- Five lever mortice lock
- Lockable windows and doors
- 0.36m roof overhang to front
- Heavy duty polyester mineral felt - available in green, black or red
- Tongue & groove timber roof & floor
- Pressure treated floor joists
- High quality timber treatment applied throughout prior to delivery (excluding pressure treated)
- A wide range of sizes to choose from

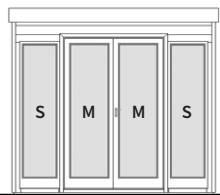
Options

- A choice of Redwood, Heavy Duty Redwood, Heavy Duty Pressure Treated, Heavy Duty Redwood Barnstyle, Heavy Duty Pressure Treated Barnstyle or Western Red Cedar tongue and groove cladding types
- Coloured painted finish - a wide selection of colours to choose from
- Tongue and groove timber lining and insulation
- Painted MDF lining and insulation
- Heavy duty floor
- Laminate floor - a wide selection to choose from
- Integral open sided area
- Composite decking upgrade to open area
- Brass or black ironmongery
- Additional windows
- Privacy style vent windows
- Internal partition walls can be added to create an additional room which can be accessed via external shed style doors and/or internal doors
- Tinted glass
- EPDM rubber roof
- Guttering and downpipe to the rear available in black, brown and white
- A set of pressure treated floor bearers

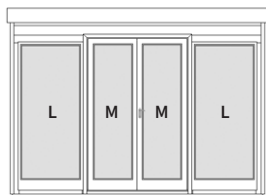
Front Window and Door Configurations

The drawings below show our standard layout with double doors centred and glazing to the front with small, medium, large and extra large windows.

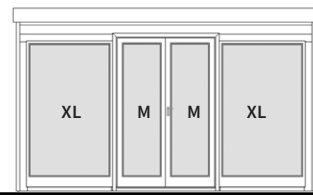
These layouts can be altered to suit your own individual requirements.



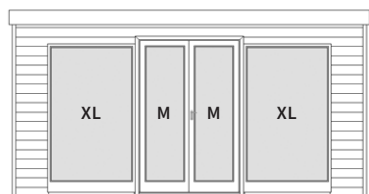
2.44m (8') front with 1.22m double doors



3.05m (10') front with 1.22m double doors



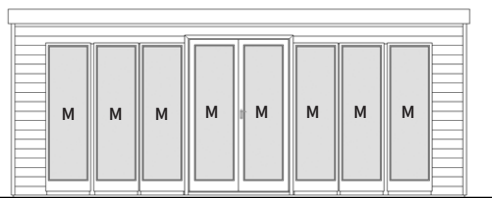
3.66m (12') front with 1.22m double doors



4.27m (14') front with 1.22m double doors



4.88m (16') front with 1.22m double doors



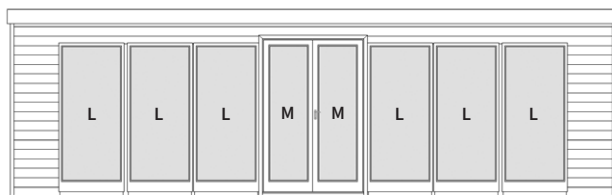
5.49m (18') front with 1.22m double doors



6.10m (20') front with 1.22m double doors



6.71m (22') front with 1.22m double doors

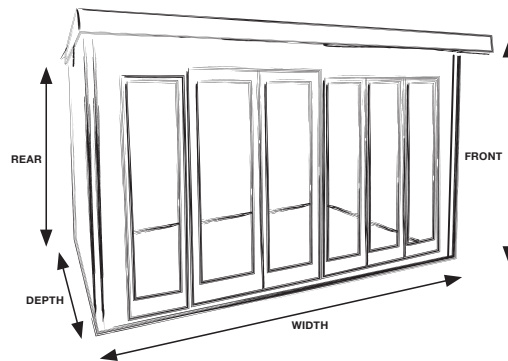


7.32m (24') front with 1.22m double doors



7.93m (26') front with 1.22m double doors

Size w x d (m)	Size w x d (ft)	Standard Redwood	Heavy Duty Redwood	Heavy Duty Pressure Treated	Heavy Duty Redwood Barnstyle	Heavy Duty Pressure Treated Barnstyle	Standard Cedar
2.44 x 1.83	8' x 6'	5,015	5,740	6,315	5,740	6,315	7,885
3.05 x 1.83	10' x 6'	5,740	6,540	7,195	6,540	7,195	9,020
3.66 x 1.83	12' x 6'	6,450	7,335	8,070	7,335	8,070	10,260
4.27 x 1.83	14' x 6'	7,175	8,275	9,105	8,275	9,105	11,625
4.88 x 1.83	16' x 6'	7,990	9,100	10,010	9,100	10,010	12,860
2.44 x 2.44	8' x 8'	5,405	6,200	6,820	6,200	6,820	9,020
3.05 x 2.44	10' x 8'	6,275	7,175	7,895	7,175	7,895	10,600
3.66 x 2.44	12' x 8'	7,060	8,065	8,870	8,065	8,870	11,935
4.27 x 2.44	14' x 8'	7,955	9,055	9,960	9,055	9,960	13,135
4.88 x 2.44	16' x 8'	8,740	10,005	11,005	10,005	11,005	14,925
5.49 x 2.44	18' x 8'	9,565	10,990	12,090	10,990	12,090	16,380
6.10 x 2.44	20' x 8'	10,405	11,930	13,125	11,930	13,125	17,775
6.71 x 2.44	22' x 8'	11,225	12,875	14,165	12,875	14,165	19,170
7.32 x 2.44	24' x 8'	12,065	13,830	15,215	13,830	15,215	20,600
3.05 x 3.05	10' x 10'	7,070	8,100	8,910	8,100	8,910	12,170
3.66 x 3.05	12' x 10'	8,030	9,150	10,065	9,150	10,065	13,600
4.27 x 3.05	14' x 10'	8,740	10,005	11,005	10,005	11,005	15,230
4.88 x 3.05	16' x 10'	9,475	10,820	11,900	10,820	11,900	16,815
5.49 x 3.05	18' x 10'	10,535	12,075	13,285	12,075	13,285	18,445
6.10 x 3.05	20' x 10'	11,405	13,055	14,360	13,055	14,360	20,040
6.71 x 3.05	22' x 10'	12,285	14,085	15,495	14,085	15,495	21,640
7.32 x 3.05	24' x 10'	13,185	15,120	16,630	15,120	16,630	23,240
7.93 x 3.05	26' x 10'	13,995	16,075	17,685	16,075	17,685	24,665



STUDIO PENT				
Building Depth (m)	External Height (m)		Internal Height (Unlined) (m)	
	Front	Rear	Front	Rear
1.83	2.26	2.06	2.06	1.91
2.44	2.26	2.06		
3.05	2.28	2.09		

Coloured Painted Finish	Tongue & Groove Lining & Insulation	Painted MDF Lining & Insulation	Tinted Glass	EPDM Rubber Roof	Heavy Duty Floor	Floor Bearers	Laminate Floor	Installation
1,575	1,630	2,990	505	360	160	120	640	320
1,780	1,910	3,430	610	445	195	130	800	405
1,970	2,205	3,850	645	525	240	135	950	465
2,200	2,445	4,305	715	620	280	140	1,115	525
2,440	2,700	4,890	785	710	325	150	1,275	600
1,825	1,960	3,530	505	475	215	140	850	465
2,025	2,270	4,065	610	595	270	150	1,070	535
2,230	2,540	4,570	645	710	325	170	1,275	610
2,420	2,845	5,220	715	825	365	200	1,490	700
2,605	3,145	5,595	785	950	430	220	1,710	980
2,815	3,420	6,125	850	1,060	480	245	1,920	1,085
3,030	3,700	6,650	945	1,180	525	270	2,135	1,220
3,250	3,970	7,155	1,015	1,305	575	300	2,345	1,340
3,460	4,240	7,675	1,100	1,420	625	320	2,565	1,470
2,325	2,610	4,665	610	740	330	200	1,325	765
2,480	2,915	5,160	645	890	385	220	1,600	845
2,685	3,385	5,785	715	1,035	465	245	1,875	995
2,890	3,540	6,330	785	1,180	525	270	2,135	1,130
3,190	3,805	6,885	850	1,335	600	290	2,410	1,290
3,430	4,035	7,260	945	1,485	655	320	2,660	1,455
3,680	4,295	7,785	1,015	1,635	720	340	2,920	1,610
3,910	4,585	8,300	1,100	1,790	790	360	3,180	1,790
4,130	4,870	8,815	1,175	1,945	865	385	3,445	1,965

Additional Windows and Doors

	Redwood		Pressure Treated		Cedar	
	Plain	Tinted	Plain	Tinted	Plain	Tinted
0.31m (12") Extra Small Fixed Window	360	450	415	505	535	625
0.46m (18") Small Fixed Window	360	450	415	505	535	625
0.46m (18") Small Vented Window	460	570	530	640	665	775
0.52m (20½") Medium Fixed Window	395	485	455	545	580	670
0.52m (20½") Medium Vented Window	495	605	570	680	710	820
0.77m (30") Large Fixed Window	535	645	615	725	715	835
0.77m (30") Large Vented Window	635	765	730	860	845	980
1.04m (41") Extra Large Fixed Window	675	805	775	905	920	1,050
1.04m (41") Extra Large Vented Window	775	925	890	1,040	1,050	1,200
0.71m (28") Privacy Window	210	235	250	285	255	290
Additional Single Door	750	855	905	1,030	1,095	1,195
Additional Double Door	1,510	1,670	1,765	1,930	2,085	2,240
0.89m (35") Malvern Opening Window Single Glazed	160	210	165	215	220	270
0.89m (35") Malvern Fixed Window Single Glazed	115	165	120	170	175	225
0.89m (35") Malvern Opening Window Double Glazed	275	325	285	335	340	390
0.89m (35") Malvern Fixed Window Double Glazed	230	280	240	290	295	345

	Redwood	Pressure Treated	Cedar
1.83m (6') Partition	280	330	655
2.44m (8') Partition	395	455	905
3.05m (10') Partition	585	675	1,255
External Shed Door	350	380	525
Internal Solid Door	405		
0.23m (9") Wide Shelf	65	per running metre	
0.38m (15") Wide Shelf	80	per running metre	
0.38m (15") Wide Workbench	80	per running metre	
0.61m (24") Wide Workbench	100	per running metre	
Composite Decking Upgrade	270	per sq metre	
Guttering	65	per running metre	

Standard Features

- Double glazed units with 4mm toughened glass both sides and 8mm cavity
- Double doors with fixed windows in the front and two opening vented windows, one in each side
- Supplied with either full length, three quarter length or half length windows. Must be specified on order
- Chrome ironmongery
- 0.36m front roof overhang
- Five lever mortice lock
- Lockable windows and doors
- Heavy duty polyester mineral felt - available in green, black or red
- Tongue & groove timber roof & floor
- Pressure treated floor joists
- High quality timber treatment applied throughout prior to delivery(excluding pressure treated)
- A wide range of sizes to choose from

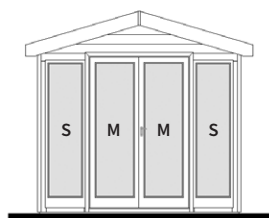
Options

- A choice of Redwood, Heavy Duty Redwood, Heavy Duty Pressure Treated, Heavy Duty Redwood Barnstyle, Heavy Duty Pressure Treated Barnstyle or Western Red Cedar tongue and groove cladding types
- Higher pitched roof
- Coloured painted finish – a wide selection of colours to choose from
- Tongue and groove timber lining and insulation
- Painted MDF lining and insulation
- Heavy duty floor
- Laminate floor – a wide selection to choose from
- Integral open area
- Composite decking upgrade to open area
- Brass or black ironmongery
- Additional windows
- Privacy style vent windows
- Internal partition walls can be added to create an additional room which can be accessed via external shed style doors and/or internal doors
- Tinted glass
- Pressure treated slatted roof
- Cedar slatted roof
- Pressure treated cedar shingle roof
- Slate effect tiled roof - a choice of three colours available
- Bitumen mineral felt tiles – a choice of three colours available
- Guttering and downpipe (dependant on roof finish) available in black, brown and white
- A set of pressure treated floor bearers

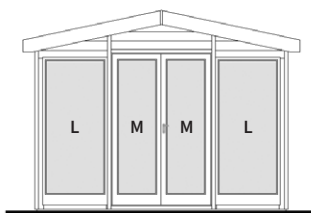
Front Window and Door Configurations

The drawings below show our standard layout with double doors centred and glazing to the front with small, medium, large and extra large windows.

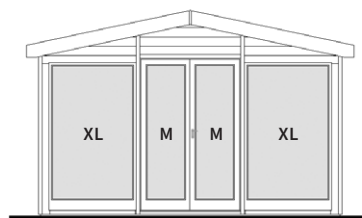
These layouts can be altered to suit your own individual requirements.



2.44m (8') front with 1.22m double doors



3.05m (10') front with 1.22m double doors



3.66m (12') front with 1.22m double doors



“Malvern Studio Apex”

Our 8 x 12 Malvern Studio Apex was delivered and installed on 28/9/22 as scheduled. The assembly was carried out very professionally by two personable and hard working people. We are very pleased with the quality and finish of our new garden room which we look forward to providing us and visitors with many years of pleasure.

written by barry.knight14 on 11/11/2022



“Studio Pent Garden Room”

This was delivered earlier than advised which was a bonus and the 2 men who erected it were very pleasant, helpful and professional. It was all completed within 3 hours and we are very pleased with it. The colour is lovely, olive grey and laminate floor very practical for my 2 dogs. It is a real asset to our garden and everyone who has seen it has admired it. All in all we are very satisfied and would recommend to anyone to have as an extra room if needed. It is warm and cosy and we look forward to sitting and possibly sleeping in our garden room.

written on 08/11/2022



“Beautiful Finished Garden Room”

We had been looking for a long time to find what we really wanted. Visited the Malvern collection and saw the 16 x 10 garden studio. We loved the high apex windows as we have a great view from our garden. Great installation team of 2 men who installed it and finished it within 2 days. Really well finished and we are really pleased with it. Great service throughout the process from ordering to processing to completed project. Thank you so much.

written by frCormier130 on 24/09/2022



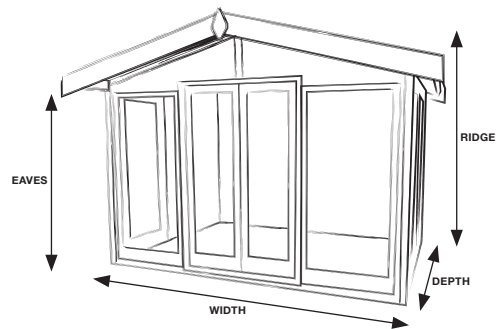
“14 x 6 Studio Flat”

We were delighted with the design and installation service provided by The Malvern Collection. The studio was built to our specifications, incorporating a partition to divide the storage area from the seating area and we were really pleased with the high quality of the finish. All the staff that we dealt with were professional and ensured that we were happy with the final product. The studios are made exclusively by Malvern and we couldn't find a similar product anywhere else, especially of such high quality. I have already recommended this company to a couple of friends!

written by Lillian141 on 23/09/2022

Size d x w (m)	Size d x w (ft)	Standard Redwood	Heavy Duty Redwood	Heavy Duty Pressure Treated	Heavy Duty Redwood Barnstyle	Heavy Duty Pressure Treated Barnstyle	Standard Cedar	Coloured Painted Finish	Tongue & Groove Lining & Insulation
2.44 x 1.83	8' x 6'	5,015	5,740	6,315	5,740	6,315	7,885	1,575	1,630
2.44 x 2.44	8' x 8'	5,405	6,200	6,820	6,200	6,820	9,020	1,825	1,960
2.44 x 3.05	8' x 10'	6,275	7,175	7,895	7,175	7,895	10,600	2,025	2,270
2.44 x 3.66	8' x 12'	7,060	8,065	8,870	8,065	8,870	11,935	2,230	2,540
2.44 x 4.27	8' x 14'	7,955	9,055	9,960	9,055	9,960	13,135	2,420	2,845
2.44 x 4.88	8' x 16'	8,740	10,005	11,005	10,005	11,005	14,925	2,605	3,145
3.05 x 1.83	10' x 6'	5,740	6,535	7,190	6,535	7,190	9,020	1,780	1,910
3.05 x 2.44	10' x 8'	6,275	7,175	7,895	7,175	7,895	10,600	2,025	2,270
3.05 x 3.05	10' x 10'	7,070	8,100	8,910	8,100	8,910	12,170	2,325	2,610
3.05 x 3.66	10' x 12'	8,015	9,150	10,065	9,150	10,065	13,600	2,480	2,915
3.05 x 4.27	10' x 14'	8,740	10,005	11,005	10,005	11,005	15,230	2,685	3,385
3.05 x 4.88	10' x 16'	9,475	10,820	11,900	10,820	11,900	16,815	2,890	3,540
3.05 x 5.49	10' x 18'	10,535	12,075	13,285	12,075	13,285	18,445	3,190	3,805
3.05 x 6.10	10' x 20'	11,405	13,055	14,360	13,055	14,360	20,040	3,430	4,035
3.66 x 2.44	12' x 8'	7,060	8,065	8,870	8,065	8,870	11,935	2,230	2,540
3.66 x 3.05	12' x 10'	8,030	9,150	10,065	9,150	10,065	13,600	2,480	2,915
3.66 x 3.66	12' x 12'	8,885	10,175	11,195	10,175	11,195	14,975	2,725	3,385
3.66 x 4.27	12' x 14'	9,840	11,200	12,320	11,200	12,320	16,815	2,945	3,585
3.66 x 4.88	12' x 16'	10,990	12,505	13,755	12,505	13,755	18,610	3,190	3,960
3.66 x 5.49	12' x 18'	11,720	13,440	14,785	13,440	14,785	20,290	3,430	4,295
3.66 x 6.10	12' x 20'	12,750	14,620	16,080	14,620	16,080	22,170	3,705	4,610

FOR HIGH PITCH VERSION - ADD 10% TO BUILDING AND ANY ADDITIONAL ROOF OPTION



STUDIO APEX						
Building Depth (m)	External Height (m)			Internal Height (Unlined) (m)		
	Ridge		Eaves	Ridge		Eaves
	Low	High		Low	High	
2.44	2.41	2.65	2.04	2.29	2.51	2.02
3.05	2.40	2.79		2.29	2.65	
3.66	2.47	2.93		2.35	2.80	

Painted MDF Lining & Insulation	Tinted Glass	Bitumen Felt Tiles	Pressure Treated Slatted Roof	Cedar Slatted Roof	Cedar Shingle Roof	Slate Effect Tiled Roof	Heavy Duty Floor	Floor Bearers	Laminate Floor	Installation
2,990	505	580	675	1,290	1,730	1,730	160	120	640	320
3,530	505	760	810	1,570	2,065	2,065	215	140	850	465
4,065	505	940	980	1,985	2,565	2,565	270	150	1,070	535
4,570	505	1,115	1,140	2,340	3,075	3,075	325	170	1,275	610
5,220	505	1,280	1,330	2,720	3,570	3,570	365	200	1,490	700
5,595	505	1,435	1,560	3,090	4,075	4,075	430	220	1,710	980
3,430	610	700	820	1,625	2,125	2,125	195	145	800	405
4,065	610	905	980	1,985	2,565	2,565	270	175	1,070	535
4,665	610	1,115	1,140	2,295	2,955	2,955	330	200	1,325	765
5,160	610	1,315	1,365	2,785	3,535	3,535	385	220	1,600	845
5,785	610	1,520	1,560	3,055	4,120	4,120	465	245	1,875	995
6,330	610	1,740	1,795	3,535	4,695	4,695	525	270	2,135	1,130
6,885	610	1,960	2,015	3,980	5,270	5,270	600	290	2,410	1,290
7,260	610	2,160	2,235	4,405	5,850	5,850	655	320	2,660	1,455
4,570	645	1,110	1,140	2,340	3,015	3,015	325	185	1,275	610
5,160	645	1,325	1,365	2,785	3,505	3,505	385	220	1,600	845
5,785	645	1,575	1,560	3,055	4,250	4,250	480	255	1,920	1,020
6,505	645	1,790	1,825	3,565	4,670	4,670	555	280	2,240	1,155
7,095	645	2,035	2,100	4,025	5,335	5,335	640	320	2,560	1,290
7,720	645	2,255	2,420	4,500	6,000	6,000	705	340	2,875	1,390
8,300	645	2,500	2,685	5,020	6,660	6,660	800	365	3,185	1,535

Additional Windows and Doors

	Redwood		Pressure Treated		Cedar	
	Plain	Tinted	Plain	Tinted	Plain	Tinted
0.31m (12") Extra Small Fixed Window	360	450	415	505	535	625
0.46m (18") Small Fixed Window	360	450	415	505	535	625
0.46m (18") Small Vented Window	460	570	530	640	665	775
0.52m (20½") Medium Fixed Window	395	485	455	545	580	670
0.52m (20½") Medium Vented Window	495	605	570	680	710	820
0.77m (30") Large Fixed Window	535	645	615	725	715	835
0.77m (30") Large Vented Window	635	765	730	860	845	980
1.04m (41") Extra Large Fixed Window	675	805	775	905	920	1,050
1.04m (41") Extra Large Vented Window	775	925	890	1,040	1,050	1,200
2.44m (8') Gable End High Level Window	295	365	340	410	460	530
3.05m (10') & 3.66m (12') Gable End High Level Window	395	485	455	525	580	670
0.71m (28") Privacy Window	210	235	250	285	255	290
Additional Single Door	750	855	905	1,030	1,095	1,195
Additional Double Door	1,510	1,670	1,765	1,930	2,085	2,240
0.89m (35") Malvern Opening Window Single Glazed	160	210	165	215	220	270
0.89m (35") Malvern Fixed Window Single Glazed	115	165	120	170	175	225
0.89m (35") Malvern Opening Window Double Glazed	275	325	285	335	340	390
0.89m (35") Malvern Fixed Window Double Glazed	230	280	240	290	295	345

	Redwood	Pressure Treated	Cedar
2.44m (8') Partition	395	455	905
3.05m (10') Partition	585	675	1,255
3.66m (12') Partition	740	845	1,580

External Shed Door	350	380	525
Internal Solid Door	405		

0.23m (9") Wide Shelf	65	per running metre
0.38m (15") Wide Shelf	80	per running metre
0.38m (15") Wide Workbench	80	per running metre
0.61m (24") Wide Workbench	100	per running metre
Composite Decking Upgrade	270	per sq metre
Guttering	65	per running metre

Standard Features

- Double glazed units with 4mm toughened glass both sides and 8mm cavity
- Double doors with opening vented windows, one either side of door
- Supplied with either full length, three quarter length or half length windows. Must be specified on order
- Chrome ironmongery
- 0.15m front roof overhang
- Five lever mortice lock
- Lockable windows and doors
- Heavy duty polyester mineral felt (pent model only) - available in green, black or red
- EPDM rubber roof (flat model)
- Tongue & groove timber roof and floor
- Pressure treated floor joists
- High quality timber treatment applied throughout prior to delivery (excluding pressure treated)
- A wide range of sizes to choose from

Options

- A choice of Redwood, Heavy Duty Redwood, Heavy Duty Pressure Treated, Heavy Duty Redwood Barnstyle, Heavy Duty Pressure Treated Barnstyle or Western Red Cedar tongue and groove cladding types
- Coloured painted finish – a wide selection of colours to choose from
- Tongue and groove timber lining and insulation
- Painted MDF lining and insulation
- Heavy duty floor
- Laminate floor – a wide selection to choose from
- Brass or black ironmongery
- Additional windows (where possible)
- Privacy style vent windows
- Tinted glass
- EPDM rubber roof (pent model only)
- Guttering and downpipe to the rears available in black, brown and white (excluding pent model)
- A set of pressure treated floor bearers

Studio Corner Pent

Size w x d (m)	Size w x d (ft)	Standard Redwood	Heavy Duty Redwood	Heavy Duty Pressure Treated
2.13 x 2.13	7' x 7'	4,150	4,730	5,205
2.44 x 2.44	8' x 8'	4,925	5,590	6,150
2.74 x 2.74	9' x 9'	5,710	6,525	7,180
3.05 x 3.05	10' x 10'	6,570	7,515	8,265

Studio Corner Flat

Size w x d (m)	Size w x d (ft)	Standard Redwood	Heavy Duty Redwood
2.13 x 2.13	7' x 7'	4,930	5,510
2.44 x 2.44	8' x 8'	5,895	6,560
2.74 x 2.74	9' x 9'	6,880	7,695
3.05 x 3.05	10' x 10'	7,965	8,910

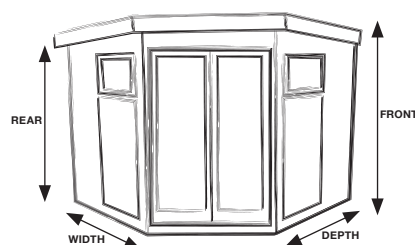
Heavy Duty Redwood Barnstyle	Heavy Duty Pressure Treated Barnstyle	Standard Cedar	Coloured Painted Finish	Tongue & Groove Lining & Insulation	Painted MDF Lining & Insulation	Tinted Glass	EPDM Rubber Roof	Heavy Duty Floor	Floor Bearers	Laminate Floor	Installation
4,730	5,205	7,130	1,585	1,670	3,010	380	365	170	130	650	380
5,590	6,150	8,325	1,825	1,960	3,530	380	475	215	135	850	485
6,525	7,180	9,565	2,050	2,270	4,080	380	600	270	165	1,080	635
7,515	8,265	11,470	2,325	2,610	4,665	380	740	330	195	1,325	805

Heavy Duty Pressure Treated	Heavy Duty Redwood Barnstyle	Heavy Duty Pressure Treated Barnstyle	Standard Cedar	Coloured Painted Finish	Tongue & Groove Lining & Insulation	Painted MDF Lining & Insulation	Tinted Glass	Heavy Duty Floor	Floor Bearers	Laminate Floor	Installation
6,060	5,510	6,060	7,910	1,585	1,670	3,010	380	170	130	650	380
7,215	6,560	7,215	9,295	1,825	1,960	3,530	380	215	135	850	485
8,465	7,695	8,465	10,735	2,050	2,270	4,080	380	270	165	1,080	635
9,800	8,910	9,800	12,865	2,325	2,610	4,665	380	330	195	1,325	805

Additional Windows

	Redwood		Pressure Treated		Cedar	
	Plain	Tinted	Plain	Tinted	Plain	Tinted
0.31m (12") Extra Small Fixed Window	280	350	320	390	440	510
0.46m (18") Small Fixed Window	360	450	415	505	535	625
0.46m (18") Small Vented Window	460	570	530	640	665	775
0.52m (20½") Medium Fixed Window	395	485	455	545	580	670
0.52m (20½") Medium Vented Window	495	605	570	680	710	820
0.77m (30") Large Fixed Window	535	645	615	725	715	835
0.77m (30") Large Vented Window	635	765	730	860	845	980
1.04m (41") Extra Large Fixed Window	675	805	775	905	920	1,050
1.04m (41") Extra Large Vented Window	775	925	890	1,040	1,050	1,200
0.71m (28") Privacy Window	210	235	250	285	255	290

STUDIO CORNER				
Building Depth (m)	External Height (m)		Internal Height (m)	
	Front	Rear	Front	Rear
2.13	2.22	2.06	2.06	1.91
2.44	2.22	2.06		
2.74	2.24	2.09		
3.05	2.24	2.09		



Glossary of Terms

Coloured Painted Finish

A comprehensive paint system is applied prior to the building leaving the factory. The paint system comprises of an initial undercoat and a further top coat of your chosen colour.

Higher Pitched Roof

For those that require extra internal height.

Tongue & Groove lining and insulation

Building is internally lined with foil back bubble insulation and covered with redwood tongue and groove matchboard.

Painted MDF lining and insulation

Building is internally lined with foil back bubble insulation and covered with a painted MDF moisture resistant tongue and groove board. Available in White, Soft White, Vintage White, Smoke White and Honey Dew.

Tinted Glass

All glazing has one side with an anti-sun tint applied to the unit.

Bitumen Felt Tiles

Roof is covered with tile effect heavy duty felt tiles.

Slatted Roof

An aesthetic roof made with featheredged pressure treated redwood or Western Red cedar boards to enhance the appearance of your building and provide added protection to the roofing felt beneath.

Cedar Shingle Roof

Western Red cedar shingles fixed to pressure treated joists to enhance the appearance of your building and provide added protection to the roofing felt beneath.

EPDM Rubber Roof

A maintenance free synthetic rubber membrane covering the roof as an alternative to roofing felt.

Slate Effect Roof Tile

Slate effect roof tile is a synthetic roof tile which emulates the appearance of natural slates and has a long life span with no maintenance.

Guttering

Guttering is available in a choice of three colours.

Integral Open Sided Area

Studio's can be divided into rooms with an open space decking area. Timber decking is used for this open area, with composite decking available as an upgrade. When choosing the open side option heavy duty flooring must be included for the whole of the building footprint.

Composite Decking

A high density, heavy duty and weather resistant wood composite.

Heavy Duty Floor Upgrade

As standard the floor is 13mm Redwood floor boards, the heavy duty floor upgrade is a 19mm Redwood unless your building is pressure treated cladding and then it is 19mm Pressure Treated Redwood.

Laminates

Premium hard wearing laminate flooring with a wide range of styles to choose from.

Brass or black ironmongery

Substitute ironmongery for either brass or black to suit your requirements.

A set of Floor Bearers

Floor Bearers are 45 x 45mm (2" x 2") pressure treated lengths of timber which run in an opposite direction to the floor joists making a crisscross formation, allowing air circulation and ventilation to your garden building, taking away direct contact from the base and helps prevent damp from attacking the timbers.

DOOR OPENINGS (W X H)	
Single Standard Door	760mm x 1830mm
Double Standard Doors	1220mm x 1830mm
Standard Shed Door	890mm x 1770mm
Narrow Shed Door	680mm x 1770mm
Internal Matchboard Door	890mm x 1770mm
Internal Solid Pine Door	760mm x 1980mm

WALL THICKNESS	
Redwood & Pressure Treated Standard Cladding	13mm
Cedar Cladding	12mm
Barnstyle Cladding	8-23mm
Redwood & Pressure Treated Heavy Duty Cladding	19mm
Framing	57mm
Tongue and Groove Lining	12mm
MDF Lining	9mm
Skirting	12mm
Cedar Skirting	12mm

FLOOR THICKNESS	
Standard Floor	13mm
Heavy Duty Floor	19mm
Pressure Treated Joists	45mm

Important Points

to note

All of our Garden Rooms come with a guarantee against rot and decay. Twelve years for cedar, eight years for pressure treated and redwood. All other workmanship and materials are guaranteed to be free from defects and faulty installation for a period of 12 months. All of our guarantees are subject to the buildings being maintained in line with our recommendations.

Our recommendations are that all timber garden structures require ongoing maintenance following installation. Cedar, redwood & pressure treated redwood require annual timber treatment to be applied, ideally prior to the colder wetter months for added protection. We recommend all spray painted buildings are maintained on an annual basis, inspect the painted areas on the building, checking for any areas where the paint finish maybe starting to deteriorate over time, peeling or flaking and repaint where necessary. A full guide of maintenance guidelines are available on request.

All base work is the responsibility of the customer, as is the safe securing of the building once installed, excluding cedar victorian. We require a level solid base, either paving slabs, decking or concrete upon which to install your building. In the event of a base failure, it is the customers responsibility to accept delivery of the building, safely and store appropriately.

Please allow as much room as possible around the building for our fitters to work during installation, a minimum of 450mm. If this is not possible please contact the office to discuss.

Our installers will need clear access to carry building sections from the vehicle to your prepared base, with no height restrictions or tight, sharp corners to negotiate.

Our installers cannot lift sections over 1.22m in height or over buildings such as garages. If the only access is through the house, a straight run is required and many sections will not pass through doorways. Please advise us in advance if there are any difficulties regarding access.

Always make allowance for any roof overhang when buildings have to go into confined spaces.

All of our non-painted redwood and cedar buildings are treated with a good quality preservative on the inside, as well as the outside, prior to leaving the factory. We recommend that you preserve your building on an annual basis to maintain the appearance and lifespan of your building.

All redwood and cedar sheds have redwood roofs and floors. Cedar buildings have cedar windows, doors and external cladding only i.e. they have redwood framing, floors, roofs and open areas. All pressure treated sheds are pressure treated throughout.

Ironmongery is chrome unless otherwise stated.

All roofs are protected with a layer of heavy duty polyester mineral felt unless otherwise stated, available in a choice of three colours.

All building dimensions shown in this brochure are approximate, based on floor sizes.

All timber used in the construction of our buildings originates from sustainable forests.

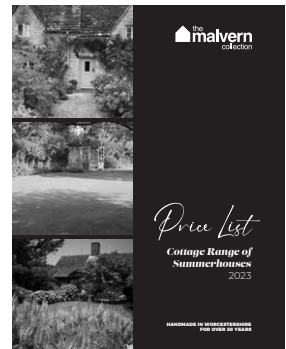
As it is our policy to continually improve products, methods and materials, we reserve the right to change specifications from time to time, we will not make any significant variations without your agreement.

All images and descriptions are for illustration purposes only and are not always standard specification.

All building sizes are approximate and for guidelines only. All timber measurements, if stated, are finished sizes only i.e. after machining. Please note that finished sizes can vary by plus or minus 1mm.

We strongly advise that you visit one of our showrooms to view the range of buildings and finishes.

Other ranges available...



Cottage Range of Summerhouses



Sheds, Workshops, Potting Sheds & Greenhouses



Garden Rooms & Offices

Quality Garden Rooms

Manufactured and installed by The Malvern Collection Limited. All prices include VAT and delivery to mainland England, Wales and Scotland* up to the Caledonian Canal.

*Restrictions may apply.

MARCH 2023