



 the
malvern
collection



Price List

**Garden Rooms and
Offices**
2023

**HANDMADE IN WORCESTERSHIRE
FOR OVER 50 YEARS**

contents

3	Welcome to the Malvern Collection
4-5	General Specifications
6-7	Hanley Flat and Apex
8-9	Hanley Hipped
10-11	Hanley Retreat
12-13	Hallow Flat
14-15	Hallow Hipped
16-17	Corney Hanley and Hallow
18-19	Hanley Plus Flat and Apex
20-21	Hanley Plus Hipped
22	Glossary of Terms
23	Important Points to Note

welcome to

the malvern collection

HANDMADE IN WORCESTERSHIRE FOR OVER 50 YEARS

In the early 1970s, we started to design and produce garden buildings at our factory in Worcestershire. All of our buildings are made to order and handcrafted using traditional carpentry techniques by skilled craftsmen, which are then delivered and installed by our own teams of experienced fitters across the country.

The Malvern Collection design and make a wide collection of buildings, from the humble shed right through to fully lined, insulated and double glazed garden rooms and offices designed for all year round use.

We offer a wide selection of optional extras which enable you to create your ideal garden room to meet not only your practical needs but also your own personal taste.

Our paint spraying shop is one of the most advanced spraying and drying facilities in the garden building industry, where buildings can be coated with a highly durable and weather resistant, low maintenance paint and primer system, which will protect and enhance your building.

At Malvern, we use only the highest quality materials from sustainable sources. Our redwood buildings are constructed using kiln dried slow grown pine from Sweden's Northern sawmills and our cedar buildings are constructed using Canadian Western Red kiln dried cedar.

We strongly recommend that you visit one of our display sites where you can examine for yourself the quality, design and materials used in the manufacture of our buildings. Experienced staff will be on hand to discuss your individual requirements.

the malvern collection

General

Outer cladding available in either Heavy Duty Redwood or Western Red Cedar tongue and groove timber. These are fixed vertically as standard but can be fixed horizontally if preferred.

All Hanley and Hallow models have uPVC double doors and windows, which are available in black, white, anthracite, grey, cream, agate grey or golden oak. They include multi point security locking systems to opening doors and windows, which greatly increases the security of the doors and windows compared to single-point locking. The Hanley Plus models have Aluminium double doors and windows also with multi-point security locking systems and are available in black, white or anthracite powder coat. Both the Hanley and the Hanley Plus can have the double doors upgraded to a single sliding patio door or in the case of the Hanley Plus, to sliding double doors.

Glass to ground glazing and privacy vents are the standard on all the Hanley and Hanley Plus versions with casement/vent style windows in the Hallow. They are all glazed with double glazed units using 4mm toughened safety glass with Planitherm heat loss coating and an argon filled cavity. Optional tinted glass is available on all models and integral blinds as an upgrade on all glass to ground versions. Apex models can also have high gable windows as optional extras.

The Hanley Retreat has a single sliding patio door as standard and a 0.61m (2') recessed porch at the front with composite decking to the front decking area.

Specifications

A comprehensive paint system is applied prior to leaving the factory. The paint system comprises of two layers of undercoat and a top coat of your chosen colour. A highly durable stain and semi gloss translucent top coat lacquer is also available.

Apex and hipped models are covered with heavy duty bitumen felt tiles in a choice of three colours (black, green or red). This can be upgraded to either a cedar shingle roof or slate effect tiled roof (available in slate black, pewter grey or brick red).

Flat roof models have an EPDM rubber roof as standard. This is a maintenance free synthetic rubber membrane designed specifically for flat roof buildings. Its highly resistant to UV (ultraviolet) and IR (infrared) and does not suffer from cracking or grazing.

All buildings are fully insulated with 50mm foil faced PIR (polyisocyanurate) insulation and a heavy duty redwood floor fixed to pressure treated redwood joists.

Guttering comes as standard on flat roof models and can be fitted to apex or hipped models as an additional extra.

The internal of all the garden rooms are finished with a patterned pre-painted 9mm MDF lining. This can be upgraded to Western Red Cedar matchboard lining at an additional price.

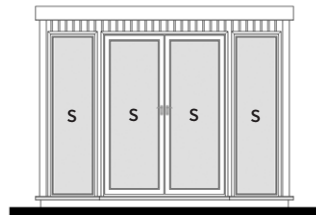
Internal partitions with doors and open areas can be added to create separate rooms or areas. This can be sized to personal choice where layouts allow.

Additional windows and doors can also be added where necessary and layout allows.

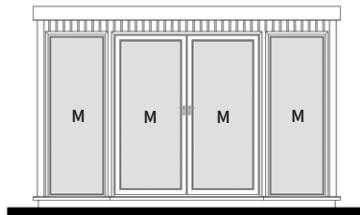
Hanley Flat and Apex Window and Door Configurations

The drawings below show our standard layout with double doors centred and glazing to the front with small, medium and large windows.

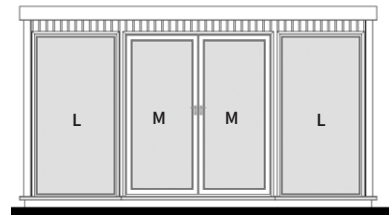
These layouts can be altered to suit your own individual requirements.



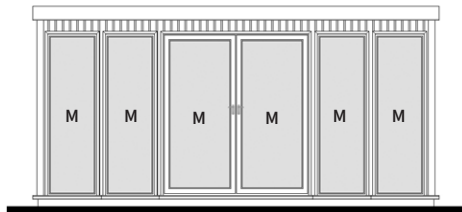
3.05m front with 1.50m double doors



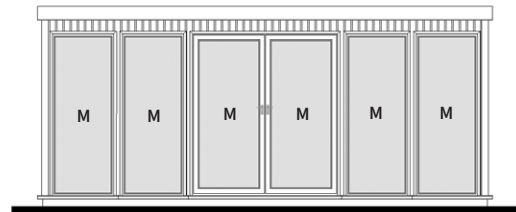
3.66m front with 1.80m double doors



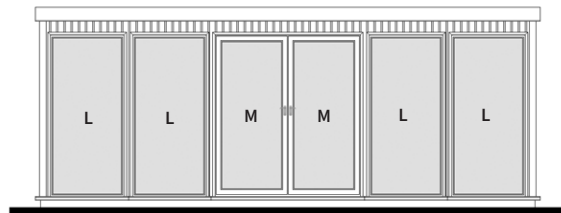
4.27m front with 1.80m double doors



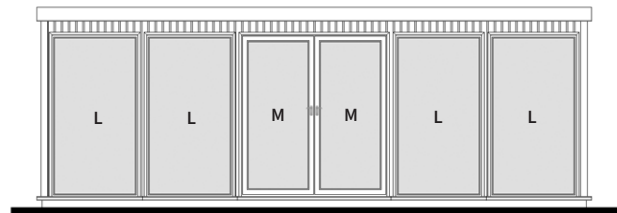
4.88m front with 1.80m double doors



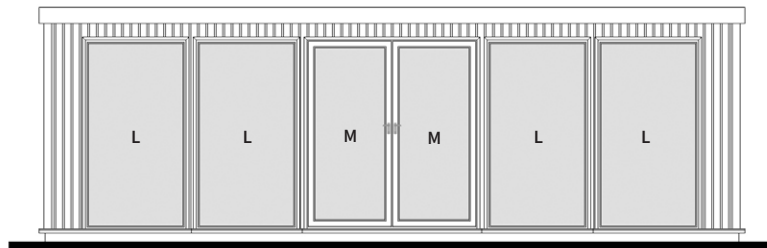
5.49m front with 1.80m double doors



6.10m front with 1.80m double doors



6.71m front with 1.80m double doors



7.32m front with 1.80m double doors

Flat heights	Depth (m)	Front (m)	Rear (m)
	2.44	2.49	2.49
	3.05	2.49	2.49
	3.66	2.49	2.49
	4.27	2.49	2.49

Apex heights	Depth (m)	Ridge (m)	Eaves (m)
	2.44	2.98	2.40
	3.05	3.12	2.40
	3.66	3.27	2.40
	4.27	3.41	2.40
	4.88	3.55	2.40

Hanley Flat and Apex

Size w x d (m)	Size w x d (ft)	Flat or Apex Roof		Cedar Internal Lining	Apex Only		Laminate Flooring	Tinted Glass
		Heavy Duty Redwood	Cedar		Pressure Treated Cedar Shingle Roof	Slate Effect Tiled Roof		
3.05 x 2.44	10 x 8	18,845	23,215	1,690	1,560	1,560	1,070	515
3.66 x 2.44	12 x 8	21,445	26,160	1,905	1,885	1,885	1,275	635
4.27 x 2.44	14 x 8	24,045	29,105	2,120	2,205	2,205	1,490	755
4.88 x 2.44	16 x 8	26,645	32,050	2,325	2,540	2,540	1,710	875
5.49 x 2.44	18 x 8	29,245	34,995	2,530	2,805	2,805	1,920	995
3.66 x 3.05	12 x 10	23,680	28,945	2,165	2,180	2,180	1,600	635
4.27 x 3.05	14 x 10	26,330	31,995	2,395	2,545	2,545	1,875	755
4.88 x 3.05	16 x 10	28,970	35,160	2,640	2,900	2,900	2,135	875
5.49 x 3.05	18 x 10	31,880	38,125	2,870	3,255	3,255	2,410	995
6.10 x 3.05	20 x 10	34,790	41,090	3,105	3,620	3,620	2,660	1,115
6.71 x 3.05	22 x 10	37,700	44,055	3,335	3,970	3,970	2,920	1,235
7.32 x 3.05	24 x 10	39,915	47,020	3,570	4,315	4,315	3,180	1,235
4.27 x 3.66	14 x 12	28,750	34,785	2,700	2,865	2,865	2,240	755
4.88 x 3.66	16 x 12	31,830	37,715	2,935	3,280	3,280	2,560	875
5.49 x 3.66	18 x 12	34,915	40,645	3,195	3,730	3,730	2,875	995
6.10 x 3.66	20 x 12	37,995	43,575	3,455	4,140	4,140	3,185	1,115
6.71 x 3.66	22 x 12	41,080	46,505	3,705	4,560	4,560	3,505	1,235
7.32 x 3.66	24 x 12	44,225	49,440	3,955	4,970	4,970	3,820	1,235
4.88 x 4.27	16 x 14	36,235	43,115	3,260	4,030	4,030	2,975	875
5.49 x 4.27	18 x 14	38,840	46,110	3,535	4,530	4,530	3,330	995
6.10 x 4.27	20 x 14	42,540	49,105	3,795	5,050	5,050	3,730	1,115
6.71 x 4.27	22 x 14	45,695	52,100	4,075	5,550	5,550	4,110	1,235
5.49 x 4.88*	18 x 16*	43,145	49,370	3,860	5,145	5,145	3,825	995
6.10 x 4.88*	20 x 16*	46,800	53,080	4,130	5,720	5,720	4,260	1,115

*Apex Only

Additional Windows, Doors and Options

Additional Windows	Small (Up to 560mm)	Medium (561mm - 850mm)	Large (Above 851mm)	Privacy Vent Window	Gable End Window (All sizes - Apex Only)
Clear	385	490	550	600	795
Tinted	465	615	710	625	920

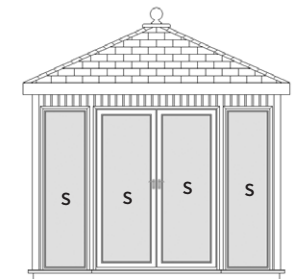
Additional Doors	Single door	Double doors	Single Sliding door	Solid/half glazed internal door
Clear	1,745	3,325	3,355	405
Tinted	1,850	3,530	3,625	-

Roof Velux (Apex only)	1,355
Internal Wall Partitions (per metre run) unlined studwork only	100
Internal Wall Partitions (per metre run) MDF both sides	510
Internal Wall Partitions (per metre run) Cedar both sides	705
Small integral blind	580
Medium integral blind	920
Large integral blind	1,095
Guttering (including downpipe per metre run) Fitted on Flat as standard	65

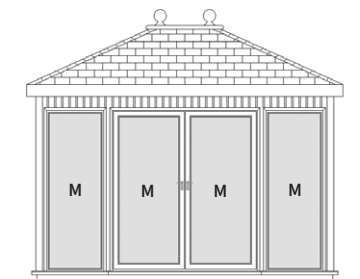
Hanley Hipped Window and Door Configurations

The drawings below show our standard layout with double doors centred and glazing to the front with small, medium and large windows. Please note, these drawings are based upon the 3.05m deep model and configurations change on different depths.

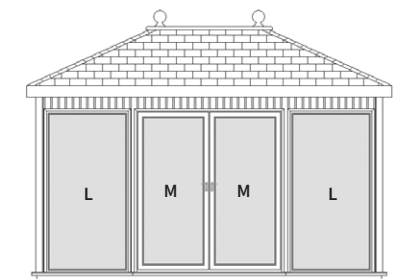
These layouts can be altered to suit your own individual requirements.



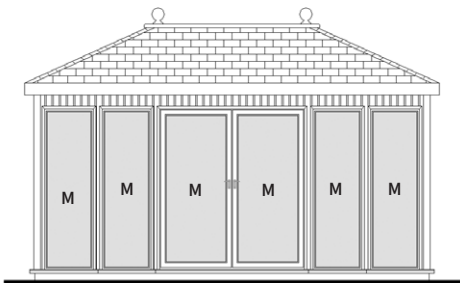
3.05m front with 1.50m double doors



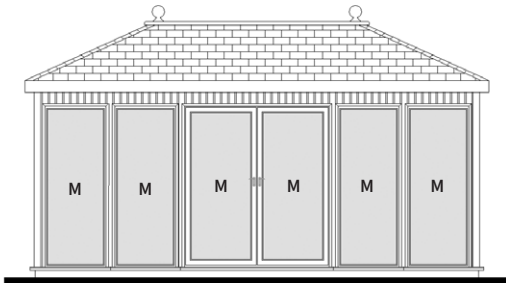
3.66m front with 1.80m double doors



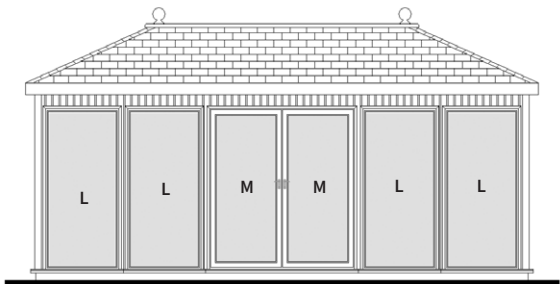
4.27m front with 1.80m double doors



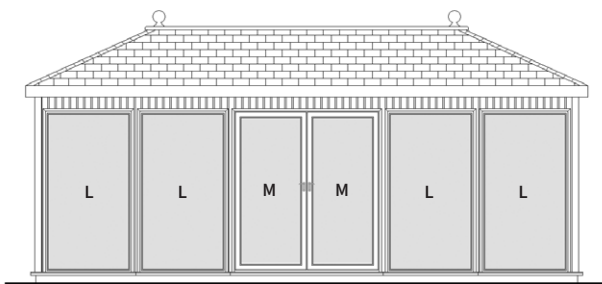
4.88m front with 1.80m double doors



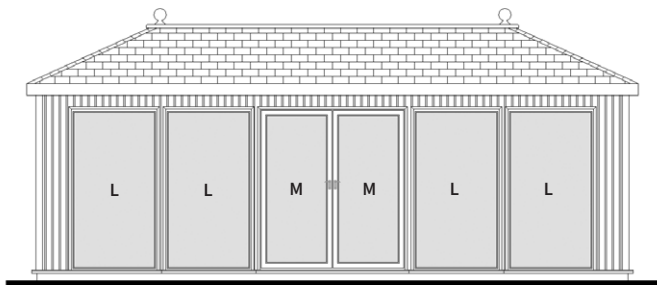
5.49m front with 1.80m double doors



6.10m front with 1.80m double doors



6.71m front with 1.80m double doors



7.32m front with 1.80m double doors

Hipped heights	Depth (m)	Ridge (m)	Eaves (m)
	2.44	3.07	2.40
	3.05	3.26	2.40
	3.66	3.45	2.40

Hanley Hipped

Size w x d (m)	Size w x d (ft)	Heavy Duty Redwood	Cedar	Cedar Internal Lining	Pressure Treated Cedar Shingle Roof	Slate Effect Tiled Roof	Laminate Flooring	Tinted Glass
3.05 x 2.44	10 x 8	20,690	25,030	1,690	2,315	2,315	1,070	515
3.66 x 2.44	12 x 8	23,530	28,210	1,905	2,790	2,790	1,275	635
4.27 x 2.44	14 x 8	26,390	31,405	2,120	3,255	3,255	1,490	755
4.88 x 2.44	16 x 8	29,245	34,605	2,325	3,745	3,745	1,710	875
5.49 x 2.44	18 x 8	32,070	37,775	2,530	4,150	4,150	1,920	995
3.66 x 3.05	12 x 10	26,270	31,490	2,165	3,230	3,230	1,600	635
4.27 x 3.05	14 x 10	29,220	34,835	2,395	3,780	3,780	1,875	755
4.88 x 3.05	16 x 10	32,175	38,310	2,640	4,295	4,295	2,135	875
5.49 x 3.05	18 x 10	35,385	41,570	2,870	4,650	4,650	2,410	995
6.10 x 3.05	20 x 10	38,590	44,830	3,105	5,345	5,345	2,660	1,115
6.71 x 3.05	22 x 10	41,805	48,090	3,335	5,880	5,880	2,920	1,235
7.32 x 3.05	24 x 10	44,320	51,350	3,570	6,375	6,375	3,180	1,235
4.27 x 3.66	14 x 12	32,080	38,060	2,700	4,255	4,255	2,240	755
4.88 x 3.66	16 x 12	35,505	41,325	2,935	4,885	4,885	2,560	875
5.49 x 3.66	18 x 12	38,930	44,585	3,195	5,515	5,515	2,875	995
6.10 x 3.66	20 x 12	42,380	47,870	3,455	6,130	6,130	3,185	1,115
6.71 x 3.66	22 x 12	45,770	51,115	3,705	6,945	6,945	3,505	1,235
7.32 x 3.66	24 x 12	49,130	54,260	3,955	7,565	7,565	3,820	1,235

Additional Windows, Doors and Options

Additional Windows	Small (Up to 560mm)	Medium (561mm - 850mm)	Large (Above 851mm)	Privacy Vent Window
Clear	385	490	550	600
Tinted	465	615	710	625

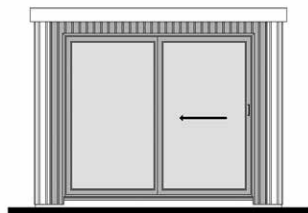
Additonal Doors	Single door	Double doors	Single Sliding door	Solid/half glazed internal door
Clear	1,745	3,325	3,355	405
Tinted	1,850	3,530	3,625	-

Roof Velux	1,355
Internal Wall Partiitions (per metre run) unlined studwork only	100
Internal Wall Partiitions (per metre run) MDF both sides	510
Internal Wall Partiitions (per metre run) Cedar both sides	705
Small integral blind	580
Medium integral blind	920
Large integral blind	1,095
Guttering (including downpipe per metre run) Fitted on Flat as standard	65

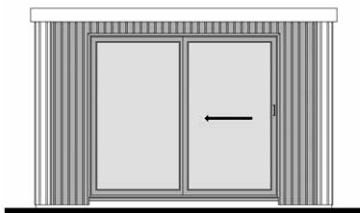
Hanley Retreat Window and Door Configurations

The drawings below show our standard layout with double doors centred and glazing to the front with small, medium and large windows.

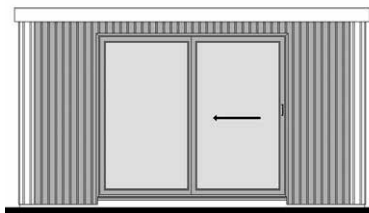
These layouts can be altered to suit your own individual requirements.



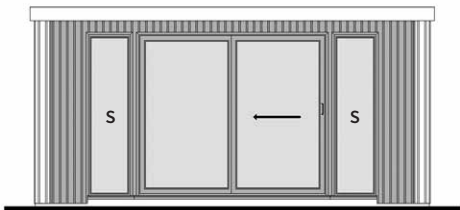
3.05m front with 2.34m sliding single door



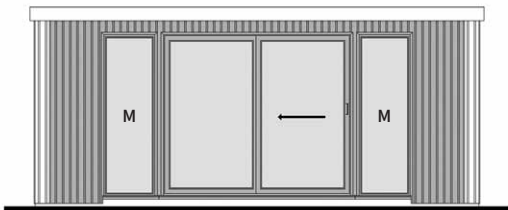
3.66m front with 2.34m sliding single door



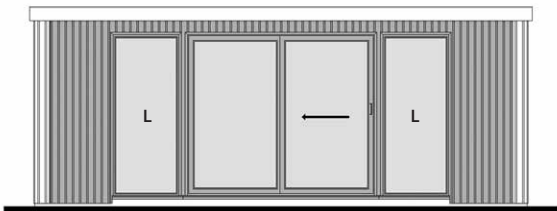
4.27m front with 2.34m sliding single door



4.88m front with 2.34m sliding single door



5.49m front with 2.34m sliding single door



6.10m front with 2.34m sliding single door

Flat heights	Depth (m)	Front (m)	Rear (m)
	2.44	2.49	2.49
	3.05	2.49	2.49
	3.66	2.49	2.49
	4.27	2.49	2.49

Hanley Retreat

Size w x d (m)	Size w x d (ft)	Heavy Duty Redwood	Cedar	Cedar Internal Lining	Laminate Flooring	Tinted Glass
3.05 x 3.05	10 x 10	20,270	25,605	1,690	1,070	395
3.66 x 3.05	12 x 10	23,040	28,745	1,905	1,275	395
4.27 x 3.05	14 x 10	25,815	31,885	2,120	1,490	395
4.88 x 3.05	16 x 10	28,590	35,025	2,325	1,710	515
5.49 x 3.05	18 x 10	31,360	38,165	2,530	1,920	635
3.66 x 3.66	12 x 12	25,275	31,530	2,165	1,600	395
4.27 x 3.66	14 x 12	28,100	34,775	2,395	1,875	395
4.88 x 3.66	16 x 12	30,915	38,135	2,640	2,135	515
5.49 x 3.66	18 x 12	33,995	41,295	2,870	2,410	635
6.10 x 3.66	20 x 12	37,075	44,450	3,105	2,660	755
4.27 x 4.27	14 x 14	30,520	37,565	2,700	2,240	755
4.88 x 4.27	16 x 14	33,775	40,690	2,935	2,560	515
5.49 x 4.27	18 x 14	37,030	43,815	3,195	2,875	635
6.10 x 4.27	20 x 14	40,280	46,935	3,455	3,185	755
4.88 x 4.88	16 x 16	38,180	46,090	3,260	2,975	515
5.49 x 4.88	18 x 16	40,955	49,280	3,535	3,330	635
6.10 x 4.88	20 x 16	44,825	52,465	3,795	3,730	755

Additional Windows, Doors and Options

Additional Windows	Small (Up to 560mm)	Medium (561mm - 850mm)	Large (Above 851mm)	Privacy Vent Window
Clear	385	490	550	600
Tinted	465	615	710	625

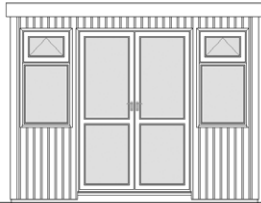
Additional Doors	Single door	Double doors	Single Sliding door	Solid/half glazed internal door
Clear	1,745	3,325	3,355	405
Tinted	1,850	3,530	3,625	-

Internal Wall Partitions (per metre run) unlined studwork only	100
Internal Wall Partitions (per metre run) MDF both sides	510
Internal Wall Partitions (per metre run) Cedar both sides	705
Small integral blind	580
Medium integral blind	920
Large integral blind	1,095

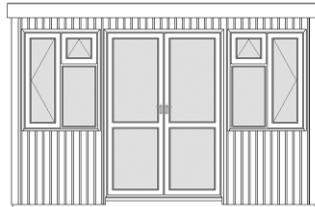
Hallow Flat and Apex Window and Door Configurations

The drawings below show our standard layout with double doors centred and glazing to the front with small, medium and large windows.

These layouts can be altered to suit your own individual requirements.



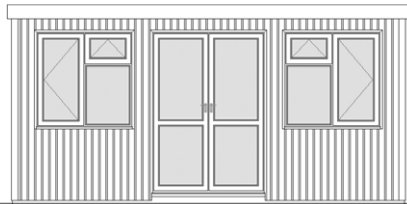
3.05m front with 1.50m double doors



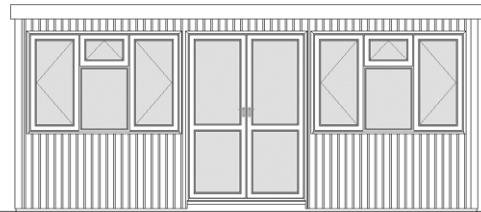
3.66m front with 1.50m double doors



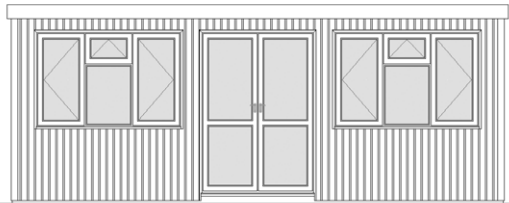
4.27m front with 1.50m double doors



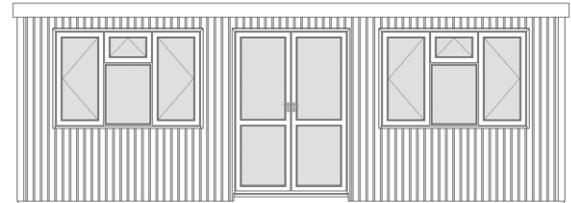
4.88m front with 1.50m double doors



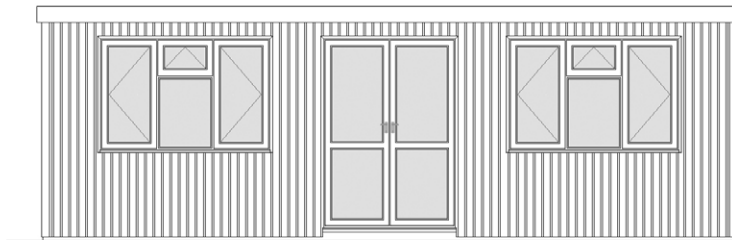
5.49m front with 1.50m double doors



6.10m front with 1.50m double doors



6.71m front with 1.50m double doors



7.32m front with 1.50m double doors

Flat heights	Depth (m)	Front (m)	Rear (m)
	2.44	2.49	2.49
	3.05	2.49	2.49
	3.66	2.49	2.49
	4.27	2.49	2.49

Apex heights	Depth (m)	Ridge (m)	Eaves (m)
	2.44	2.98	2.40
	3.05	3.12	2.40
	3.66	3.27	2.40
	4.27	3.41	2.40
	4.88	3.55	2.40

Hallow Flat and Apex

Size w x d (m)	Size w x d (ft)	Flat or Apex Roof		Cedar Internal Lining	Apex Only		Laminate Flooring	Tinted Glass
		Heavy Duty Redwood	Cedar		Pressure Treated Cedar Shingle Roof	Slate Effect Tiled Roof		
3.05 x 2.44	10 x 8	19,090	23,460	1,690	1,560	1,560	1,070	405
3.66 x 2.44	12 x 8	20,835	25,625	1,905	1,885	1,885	1,275	455
4.27 x 2.44	14 x 8	24,705	29,880	2,120	2,205	2,205	1,490	495
4.88 x 2.44	16 x 8	27,355	33,050	2,325	2,540	2,540	1,710	495
5.49 x 2.44	18 x 8	29,435	35,605	2,530	2,805	2,805	1,920	575
3.66 x 3.05	12 x 10	24,145	29,400	2,165	2,180	2,180	1,600	455
4.27 x 3.05	14 x 10	27,605	33,250	2,395	2,545	2,545	1,875	495
4.88 x 3.05	16 x 10	28,955	35,140	2,640	2,900	2,900	2,135	495
5.49 x 3.05	18 x 10	31,145	37,805	2,870	3,255	3,255	2,410	575
6.10 x 3.05	20 x 10	32,570	39,825	3,105	3,620	3,620	2,660	575
6.71 x 3.05	22 x 10	37,760	45,380	3,335	3,970	3,970	2,920	575
7.32 x 3.05	24 x 10	39,035	47,080	3,570	4,315	4,315	3,180	575
4.27 x 3.66	14 x 12	29,070	35,105	2,700	2,865	2,865	2,240	495
4.88 x 3.66	16 x 12	30,550	37,120	2,935	3,280	3,280	2,560	495
5.49 x 3.66	18 x 12	32,855	39,895	3,195	3,730	3,730	2,875	575
6.10 x 3.66	20 x 12	38,325	45,865	3,455	4,140	4,140	3,185	575
6.71 x 3.66	22 x 12	39,690	47,680	3,705	4,560	4,560	3,505	575
7.32 x 3.66	24 x 12	41,075	49,495	3,955	4,970	4,970	3,820	575
4.88 x 4.27	16 x 14	36,215	43,095	3,260	4,030	4,030	2,975	495
5.49 x 4.27	18 x 14	38,625	45,975	3,535	4,530	4,530	3,330	575
6.10 x 4.27	20 x 14	40,280	48,215	3,795	5,050	5,050	3,730	575
6.71 x 4.27	22 x 14	41,775	50,140	4,075	5,550	5,550	4,110	575
5.49 x 4.88*	18 x 16*	39,445	47,515	3,860	5,145	5,145	3,825	575
6.10 x 4.88*	20 x 16*	42,780	51,085	4,130	5,720	5,720	4,260	575

*Apex Only

Additional Windows, Doors and Options

Additional Windows	600mm Top Opening	900mm Casement Vent	1200mm Casement Vent	1800mm Casement Vent	Privacy Vent Window
Clear	555	865	935	1,385	600
Tinted	595	935	1,025	1,515	625

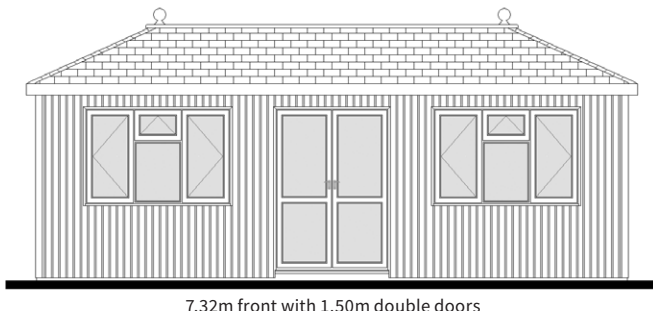
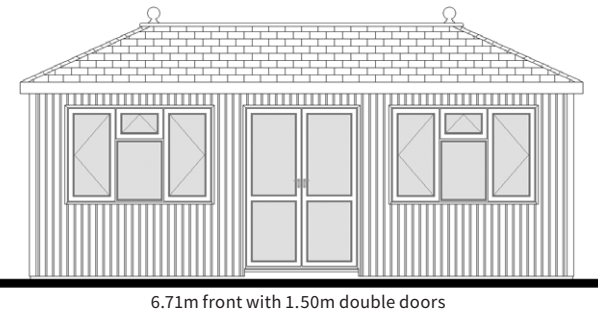
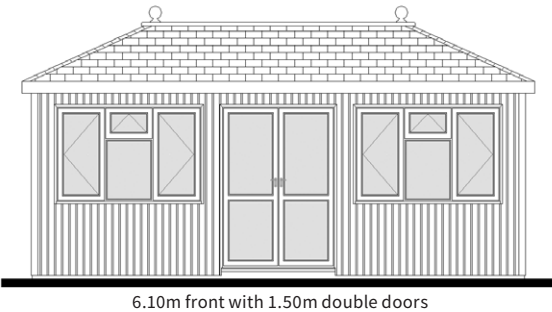
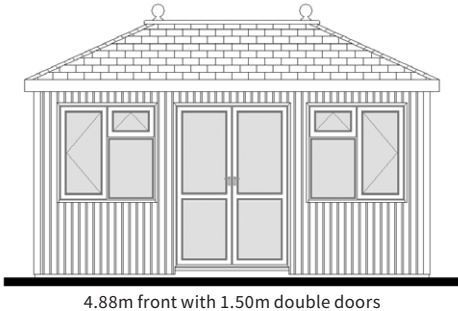
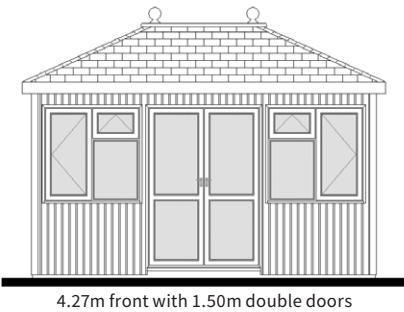
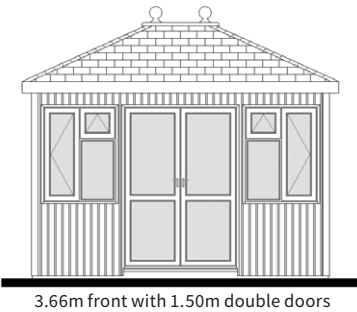
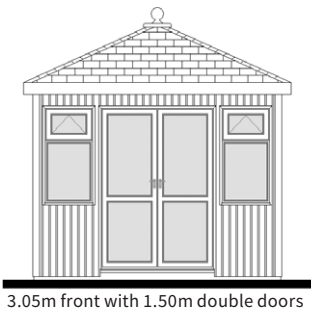
Additional Doors	Single door	Double doors	Solid/half glazed internal door
Clear	1,745	3,325	405
Tinted	1,850	3,530	-

Roof Velux (Apex only)	1,355
Internal Wall Partitions (per metre run) unlined studwork only	100
Internal Wall Partitions (per metre run) MDF both sides	510
Internal Wall Partitions (per metre run) Cedar both sides	705
Guttering (including downpipe per metre run) Fitted on Flat as standard	65

Hallow Hipped Window and Door Configurations

The drawings below show our standard layout with double doors centred and glazing to the front with small, medium and large windows. Please note, these drawings are based upon the 3.05m deep model and configurations change on different depths.

These layouts can be altered to suit your own individual requirements.



Hipped heights	Depth (m)	Ridge (m)	Eaves (m)
	2.44	3.07	2.40
	3.05	3.26	2.40
	3.66	3.45	2.40

Hallow Hipped

Size w x d (m)	Size w x d (ft)	Heavy Duty Redwood	Cedar	Cedar Internal Lining	Pressure Treated Cedar Shingle Roof	Slate Effect Tiled Roof	Laminate Flooring	Tinted Glass
3.05 x 2.44	10 x 8	20,935	25,275	1,690	2,315	2,315	1,070	405
3.66 x 2.44	12 x 8	22,920	27,675	1,905	2,790	2,790	1,275	455
4.27 x 2.44	14 x 8	27,050	32,180	2,120	3,255	3,255	1,490	495
4.88 x 2.44	16 x 8	29,955	35,605	2,325	3,745	3,745	1,710	495
5.49 x 2.44	18 x 8	32,265	38,385	2,530	4,150	4,150	1,920	575
3.66 x 3.05	12 x 10	26,735	31,945	2,165	3,230	3,230	1,600	455
4.27 x 3.05	14 x 10	30,495	36,090	2,395	3,780	3,780	1,875	495
4.88 x 3.05	16 x 10	32,160	38,290	2,640	4,295	4,295	2,135	495
5.49 x 3.05	18 x 10	34,650	41,250	2,870	4,650	4,650	2,410	575
6.10 x 3.05	20 x 10	36,370	43,565	3,105	5,345	5,345	2,660	575
6.71 x 3.05	22 x 10	41,865	49,415	3,335	5,880	5,880	2,920	575
7.32 x 3.05	24 x 10	43,440	51,410	3,570	6,375	6,375	3,180	575
4.27 x 3.66	14 x 12	32,400	38,380	2,700	4,255	4,255	2,240	495
4.88 x 3.66	16 x 12	34,225	40,730	2,935	4,885	4,885	2,560	495
5.49 x 3.66	18 x 12	36,870	43,835	3,195	5,515	5,515	2,875	575
6.10 x 3.66	20 x 12	42,705	50,160	3,455	6,130	6,130	3,185	575
6.71 x 3.66	22 x 12	44,380	52,290	3,705	6,945	6,945	3,505	575
7.32 x 3.66	24 x 12	45,980	54,315	3,955	7,565	7,565	3,820	575

Additional Windows, Doors and Options

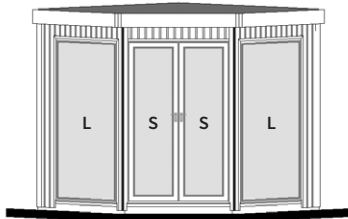
Additional Windows	600mm Top Opening	900mm Casement Vent	1200mm Casement Vent	1800mm Casement Vent	Privacy Vent Window
Clear	555	865	935	1,385	600
Tinted	595	935	1,025	1,515	625

Additional Doors	Single door	Double doors	Solid/half glazed internal door
Clear	1,745	3,325	405
Tinted	1,850	3,530	-

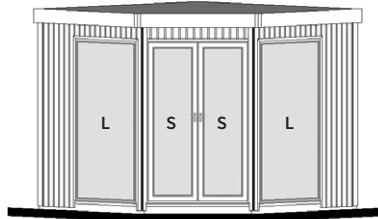
Roof Velux	1,355
Internal Wall Partitions (per metre run) unlined studwork only	100
Internal Wall Partitions (per metre run) MDF both sides	510
Internal Wall Partitions (per metre run) Cedar both sides	705
Guttering (including downpipe per metre run) Fitted on Flat as standard	65

Corner Hanley Window and Door Configurations

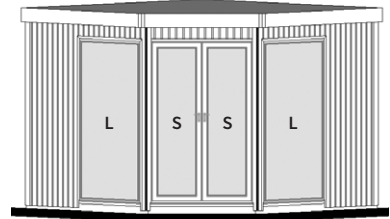
The drawings below show our standard layout with double doors, one fully glazed glass to ground window in each side and two privacy windows, one in each back.



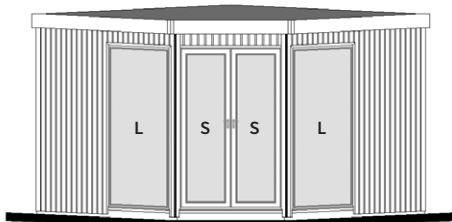
2.44m x 2.44m with 1.22m double doors



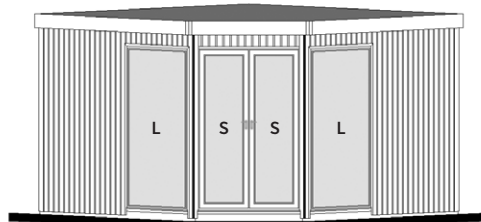
2.74m x 2.74m with 1.22m double doors



3.05m x 3.05m with 1.22m double doors



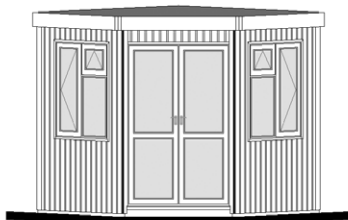
3.35m x 3.35m with 1.22m double doors



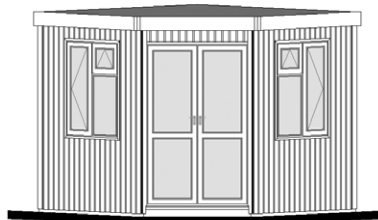
3.66m x 3.66m with 1.22m double doors

Corner Hollow Window and Door Configurations

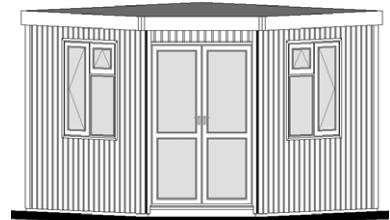
The drawings below show our standard layout with double doors, one fully glazed casement/vent in each side.



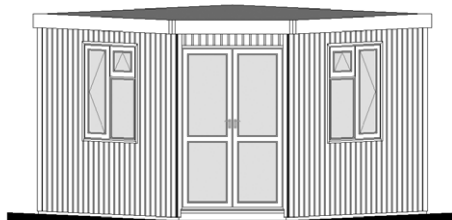
2.44m x 2.44m with 1.22m double doors



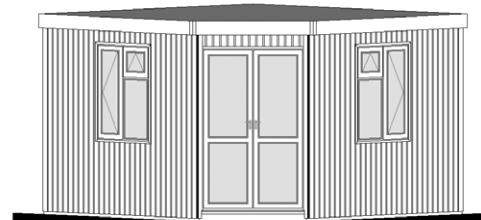
2.74m x 2.74m with 1.22m double doors



3.05m x 3.05m with 1.22m double doors



3.35m x 3.35m with 1.22m double doors



3.66m x 3.66m with 1.22m double doors

Hanley Corner

Size w x d (m)	Size w x d (ft)	Flat		Cedar Internal Lining	Laminate Flooring	Tinted Glass
		Heavy Duty Redwood	Cedar			
2.44 x 2.44	8 x 8	17,320	21,260	1,475	850	495
2.74 x 2.74	9 x 9	18,695	23,105	1,705	1,080	495
3.05 x 3.05	10 x 10	20,075	24,945	1,935	1,325	495
3.35 x 3.35	11 x 11	23,535	28,780	2,200	1,615	495
3.66 x 3.66	12 x 12	26,995	32,610	2,465	1,920	495
Additional Windows		Small (Up to 560mm)	Medium (561mm - 850mm)	Large (Above 851mm)	Privacy Vent Window	
Clear		385	490	550	600	
Tinted		465	615	710	625	

Hallow Corner

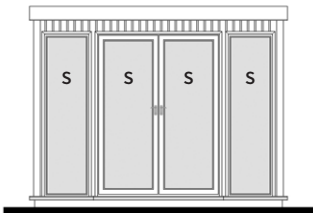
Size w x d (m)	Size w x d (ft)	Flat		Cedar Internal Lining	Laminate Flooring	Tinted Glass
		Heavy Duty Redwood	Cedar			
2.44 x 2.44	8 x 8	17,345	21,290	1,475	850	355
2.74 x 2.74	9 x 9	18,835	23,240	1,705	1,080	355
3.05 x 3.05	10 x 10	20,325	25,190	1,935	1,325	355
3.35 x 3.35	11 x 11	23,895	29,130	2,200	1,615	355
3.66 x 3.66	12 x 12	27,460	33,070	2,465	1,920	355
Additional Windows		600mm Top Opening	900mm Casement Vent	1200mm Casement Vent	1800mm Casement Vent	Privacy Vent Window
Clear		555	865	935	1,385	600
Tinted		595	935	1,025	1,515	625

Corner Flat heights	Depth (m)	Front (m)	Rear (m)
	2.44	2.49	2.49
	2.74	2.49	2.49
	3.05	2.49	2.49
	3.35	2.49	2.49
	3.66	2.49	2.49

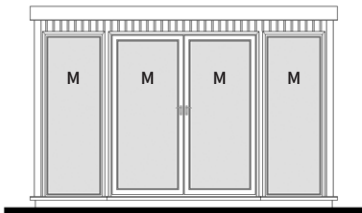
Hanley Plus Flat and Apex Window and Door Configurations

The drawings below show our standard layout with double doors centred and glazing to the front with small, medium and large windows.

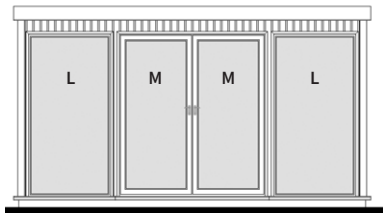
These layouts can be altered to suit your own individual requirements.



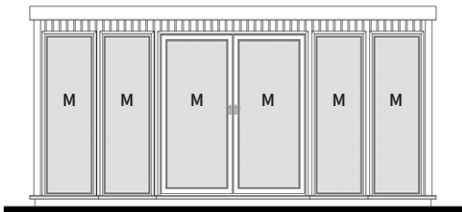
3.05m front with 1.50m double doors



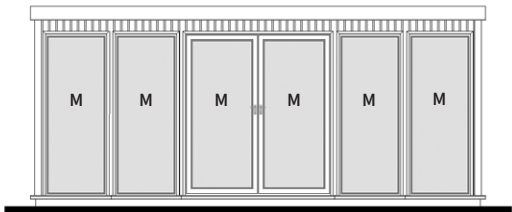
3.66m front with 1.80m double doors



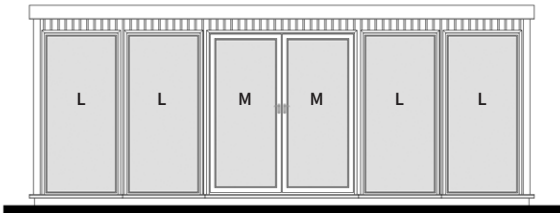
4.27m front with 1.80m double doors



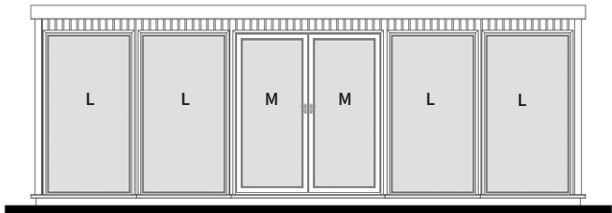
4.88m front with 1.80m double doors



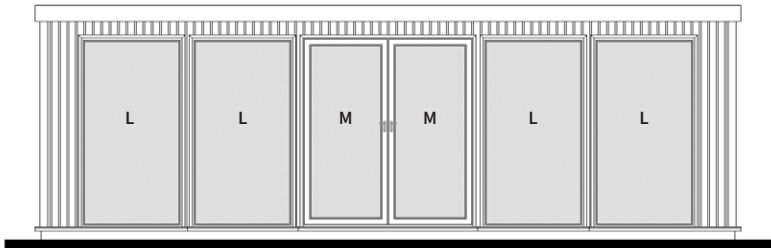
5.49m front with 1.80m double doors



6.10m front with 1.80m double doors



6.71m front with 1.80m double doors



7.32m front with 1.80m double doors

Flat heights	Depth (m)	Front (m)	Rear (m)
	2.44	2.49	2.49
	3.05	2.49	2.49
	3.66	2.49	2.49
	4.27	2.49	2.49

Apex heights	Depth (m)	Ridge (m)	Eaves (m)
	2.44	2.98	2.40
	3.05	3.12	2.40
	3.66	3.27	2.40
	4.27	3.41	2.40
	4.88	3.55	2.40

Hanley Plus Flat and Apex

Size w x d (m)	Size w x d (ft)	Flat or Apex Roof		Cedar Internal Lining	Apex Only		Laminate Flooring	Tinted Glass
		Heavy Duty Redwood	Cedar		Pressure Treated Cedar Shingle Roof	Slate Effect Tiled Roof		
3.05 x 2.44	10 x 8	25,115	29,380	1,690	1,560	1,560	1,070	515
3.66 x 2.44	12 x 8	26,660	31,350	1,905	1,885	1,885	1,275	635
4.27 x 2.44	14 x 8	30,700	35,770	2,120	2,205	2,205	1,490	755
4.88 x 2.44	16 x 8	33,450	38,995	2,325	2,540	2,540	1,710	875
5.49 x 2.44	18 x 8	35,985	42,020	2,530	2,805	2,805	1,920	995
3.66 x 3.05	12 x 10	29,975	35,125	2,165	2,180	2,180	1,600	635
4.27 x 3.05	14 x 10	33,600	39,140	2,395	2,545	2,545	1,875	755
4.88 x 3.05	16 x 10	36,070	42,135	2,640	2,900	2,900	2,135	875
5.49 x 3.05	18 x 10	37,685	44,230	2,870	3,255	3,255	2,410	995
6.10 x 3.05	20 x 10	40,320	47,440	3,105	3,620	3,620	2,660	1,115
6.71 x 3.05	22 x 10	43,200	50,220	3,335	3,970	3,970	2,920	1,235
7.32 x 3.05	24 x 10	46,075	54,000	3,570	4,315	4,315	3,180	1,235
4.27 x 3.66	14 x 12	35,070	41,000	2,700	2,865	2,865	2,240	755
4.88 x 3.66	16 x 12	37,670	44,115	2,935	3,280	3,280	2,560	875
5.49 x 3.66	18 x 12	40,410	47,320	3,195	3,730	3,730	2,875	995
6.10 x 3.66	20 x 12	43,000	50,960	3,455	4,140	4,140	3,185	1,115
6.71 x 3.66	22 x 12	46,730	54,600	3,705	4,560	4,560	3,505	1,235
7.32 x 3.66	24 x 12	48,120	56,415	3,955	4,970	4,970	3,820	1,235
4.88 x 4.27	16 x 14	43,330	50,090	3,260	4,030	4,030	2,975	875
5.49 x 4.27	18 x 14	45,160	52,400	3,535	4,530	4,530	3,330	995
6.10 x 4.27	20 x 14	47,010	54,835	3,795	5,050	5,050	3,730	1,115
6.71 x 4.27	22 x 14	48,815	57,060	4,075	5,550	5,550	4,110	1,235
5.49 x 4.88*	18 x 16*	46,095	54,075	3,860	5,145	5,145	3,825	995
6.10 x 4.88*	20 x 16*	49,990	58,135	4,130	5,720	5,720	4,260	1,115

*Apex Only

Additional Windows, Doors and Options

Additional Windows	Small (Up to 560mm)	Medium (561mm - 850mm)	Large (Above 851mm)	Privacy Vent Window	Gable End Window (All sizes - Apex Only)
Clear	755	855	920	1,335	1,765
Tinted	835	980	1,080	1,360	1,890

Additional Doors	Single door	Double doors	Solid/half glazed internal door
Clear	3,485	6,635	405
Tinted	3,590	6,840	-

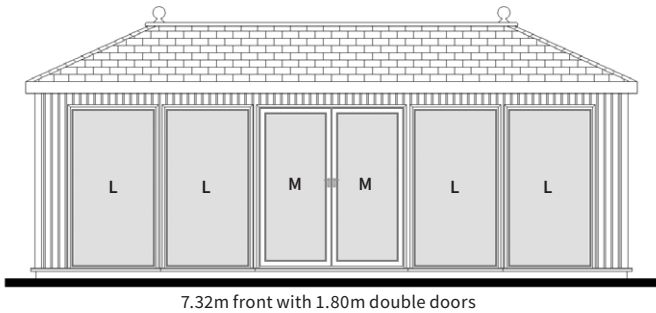
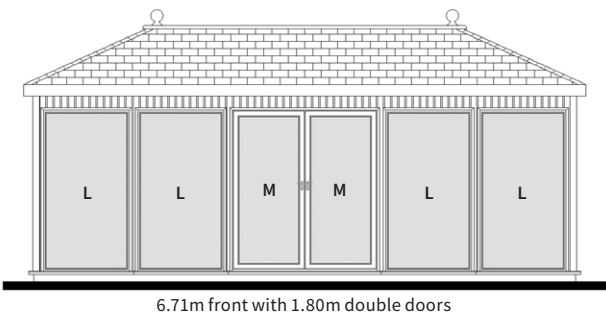
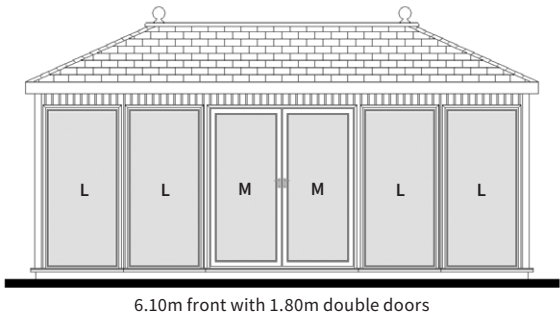
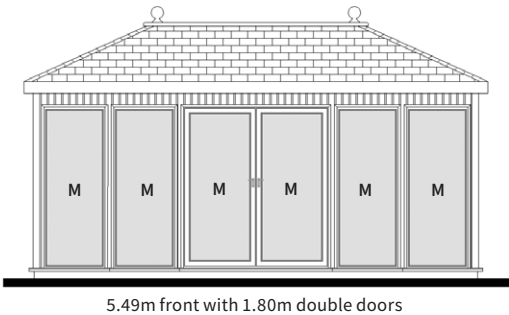
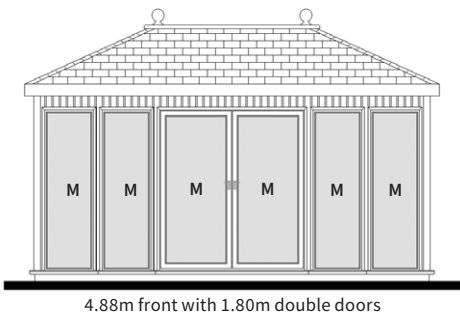
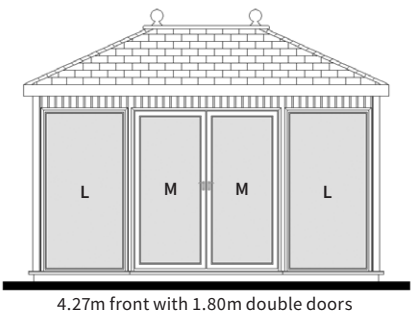
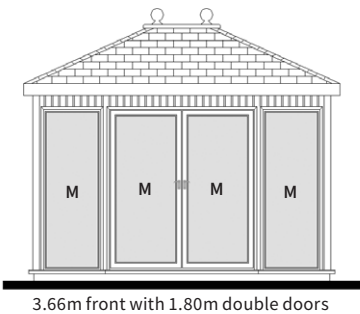
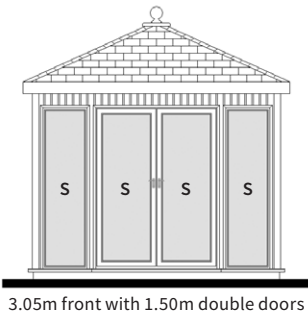
	Single Sliding door	Double Sliding Door
Doors in lieu of Double Doors	830	4,745

Roof Velux (Apex only)	1,355
Internal Wall Partitions (per metre run) unlined studwork only	100
Internal Wall Partitions (per metre run) MDF both sides	510
Internal Wall Partitions (per metre run) Cedar both sides	705
Small integral blind	580
Medium integral blind	920
Large integral blind	1,095
Guttering (including downpipe per metre run) Fitted on Flat as standard	65

Hanley Plus Hipped Window and Door Configurations

The drawings below show our standard layout with double doors centred and glazing to the front with small, medium and large windows. Please note, these drawings are based upon the 3.05m deep model and configurations change on different depths.

These layouts can be altered to suit your own individual requirements.



Hipped heights	Depth (m)	Ridge (m)	Eaves (m)
	2.44	3.07	2.40
	3.05	3.26	2.40
	3.66	3.45	2.40

Hanley Plus Hipped

Size w x d (m)	Size w x d (ft)	Heavy Duty Redwood	Cedar	Cedar Internal Lining	Pressure Treated Cedar Shingle Roof	Slate Effect Tiled Roof	Laminate Flooring	Tinted Glass
3.05 x 2.44	10 x 8	26,965	31,195	1,690	2,315	2,315	1,070	515
3.66 x 2.44	12 x 8	28,550	33,400	1,905	2,790	2,790	1,275	635
4.27 x 2.44	14 x 8	32,995	38,070	2,120	3,255	3,255	1,490	755
4.88 x 2.44	16 x 8	35,995	41,550	2,325	3,745	3,745	1,710	875
5.49 x 2.44	18 x 8	38,925	44,800	2,530	4,150	4,150	1,920	995
3.66 x 3.05	12 x 10	32,520	37,670	2,165	3,230	3,230	1,600	635
4.27 x 3.05	14 x 10	36,905	41,980	2,395	3,780	3,780	1,875	755
4.88 x 3.05	16 x 10	39,220	45,285	2,640	4,295	4,295	2,135	875
5.49 x 3.05	18 x 10	42,130	47,675	2,870	4,650	4,650	2,410	995
6.10 x 3.05	20 x 10	44,995	51,180	3,105	5,345	5,345	2,660	1,115
6.71 x 3.05	22 x 10	47,235	54,255	3,335	5,880	5,880	2,920	1,235
7.32 x 3.05	24 x 10	52,945	58,330	3,570	6,375	6,375	3,180	1,235
4.27 x 3.66	14 x 12	38,345	44,275	2,700	4,255	4,255	2,240	755
4.88 x 3.66	16 x 12	41,280	47,725	2,935	4,885	4,885	2,560	875
5.49 x 3.66	18 x 12	44,855	51,260	3,195	5,515	5,515	2,875	995
6.10 x 3.66	20 x 12	48,305	55,255	3,455	6,130	6,130	3,185	1,115
6.71 x 3.66	22 x 12	52,840	59,210	3,705	6,945	6,945	3,505	1,235
7.32 x 3.66	24 x 12	55,940	61,235	3,955	7,565	7,565	3,820	1,235

Additional Windows, Doors and Options

Additional Windows	Small (Up to 560mm)	Medium (561mm - 850mm)	Large (Above 851mm)	Privacy Vent Window
Clear	755	855	920	1,335
Tinted	835	980	1,080	1,360

Additional Doors	Single door	Double doors	Solid/half glazed internal door
Clear	3,485	6,635	405
Tinted	3,590	6,840	-

	Single Sliding door	Double Sliding Door
Doors in lieu of Double Doors	830	4,745

Roof Velux (Apex and Hipped only)	1,355
Internal Wall Partitions (per metre run) unlined studwork only	100
Internal Wall Partitions (per metre run) MDF both sides	510
Internal Wall Partitions (per metre run) Cedar both sides	705
Small integral blind	580
Medium integral blind	920
Large integral blind	1,095
Guttering (including downpipe per metre run) Fitted on Flat as standard	65

Technical Specification

WALL CONSTRUCTION

Scandinavian redwood or Western Red Cedar timber are used to clad to the external walls of the garden room. This can be either vertically or horizontally boarded. The timber clad walls are then lined with a breather paper membrane. Scandinavian redwood is used for the internal frame construction. The cavity walls are insulated using 50mm foil backed insulation board. Internally, the walls are lined with 9mm pre-painted patterned MDF as standard, upgrade available of 12mm cedar tongue & groove matchboard.

FLOOR

19mm redwood tongue and groove boards fixed to 44mm x 69mm pressure treated redwood joists with a breathable paper membrane sandwiched between. The floors are sprayed with a high quality timber preservative. Techniboard insulation is laid on top of the internal floor.

ROOF

Scandinavian redwood is used for our roof framework construction. 12mm tongue and groove matchboard is used on our flat roof models which are then covered by an EPDM rubber roof system. On the apex and hipped roof models, heavy duty bitumen roof tiles are laid onto 12mm redwood tongue and groove boards.

A breathable paper membrane is fixed between the roof boards and the redwood joists on all models. Our roof sections are sprayed with a high quality timber preservative prior to leaving the factory. 50mm foil backed insulation fills the cavity between the joists and 9mm prepainted patterned MDF lining. Cedar shingles can be used as an optional upgrade on the apex and hipped models. Guttering is fitted to the rear on a flat roof model as standard and as an option on the apex and hipped models.

EXTERNAL FINISH

A comprehensive paint system is applied prior to the building leaving the factory to protect and decorate your building. The paint system comprises of an initial undercoat and a further top coat of your chosen colour. A wide selection of colours are available to suit.

HANLEY DOORS & WINDOWS

All Hanley windows and doors are made from uPVC and fitted with double glazed units using 4mm toughened glass with Planitherm heat loss coating as standard. All opening windows are fitted with a lockable key catch.

HALLOW DOORS & WINDOWS

All Hallow windows and doors are made from uPVC and fitted with double glazed units using 4mm toughened glass with Planitherm heat loss coating as standard. All opening windows are fitted with a lockable key catch.

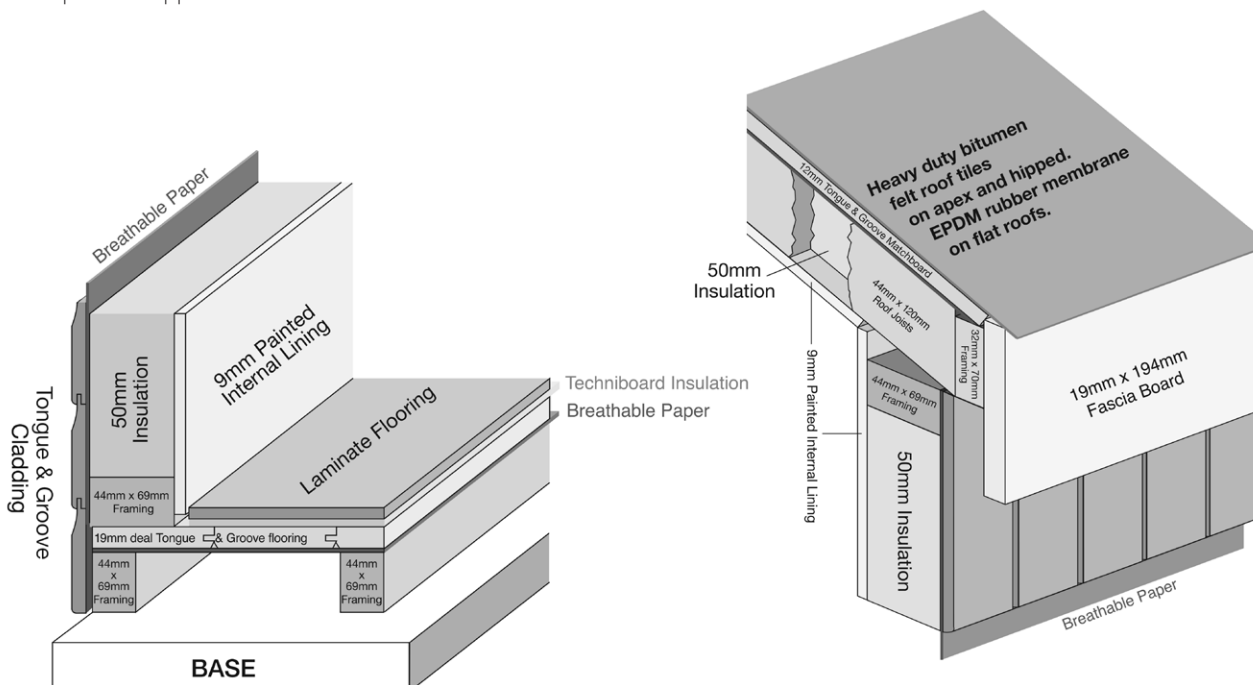
HANLEY PLUS DOORS & WINDOWS

All Hanley Plus windows and doors are made from powder coated aluminium and fitted with double glazed units using 4mm toughened glass with Planitherm heat loss coating as standard.

INTEGRAL BLINDS

The integral blind system is available as an optional upgrade on glass to ground versions only and is a great alternative to curtains or fitted blinds.

The integral blinds are fitted within the sealed double glazed units and are operated by a magnetic control. These are available in a choice of colours.



Important Points

to note

All of our Garden Rooms and Offices come with a guarantee against rot and decay. Twelve years for cedar and eight years for redwood. All other workmanship and materials are guaranteed to be free from defects and faulty installation for a period of 12 months. All of our guarantees are subject to the buildings being maintained in line with our recommendations.

Our recommendations are that all timber garden structures require ongoing maintenance following installation. Cedar and redwood require annual timber treatment to be applied, ideally prior to the colder wetter months for added protection. We recommend all spray painted buildings are maintained on an annual basis, inspect the painted areas on the building, checking for any areas where the paint finish maybe starting to deteriorate over time, peeling or flaking and repaint where necessary. A full guide of maintenance guidelines are available on request.

All base work is the responsibility of the customer, as is the safe securing of the building once installed. We require a level solid base, either paving slabs, decking or concrete upon which to install your building. In the event of a base failure, it is the customers responsibility to accept delivery of the building, safely and store appropriately.

Please allow as much room as possible around the building for our fitters to work during installation, a minimum of 450mm. If this is not possible please contact the office to discuss.

Our installers will need clear access to carry building sections from the vehicle to your prepared base, with no height restrictions or tight, sharp corners to negotiate.

Our installers cannot lift sections over 1.22m in height or over buildings such as garages. If the only access is through the house, a straight run is required and many sections will not pass through doorways. Please advise us in advance if there are any difficulties regarding access.

Always make allowance for any roof overhang when buildings have to go into confined spaces.

All redwood and cedar garden rooms have redwood roofs and floors. Cedar buildings have external cladding only i.e. they have redwood framing, floors, roofs and open areas.

All building dimensions shown in this brochure are approximate, based on floor sizes.

All timber used in the construction of our buildings originates from sustainable forests.

As it is our policy to continually improve products, methods and materials, we reserve the right to change specifications from time to time, we will not make any significant variations without your agreement.

All images and descriptions are for illustration purposes only and are not always standard specification.

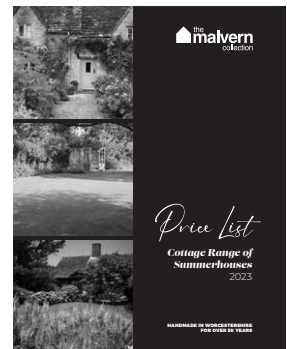
All building sizes are approximate and for guidelines only. All timber measurements, if stated, are finished sizes only i.e. after machining. Please note that finished sizes can vary by plus or minus 1mm.

We strongly advise that you visit one of our showrooms to view the range of buildings and finishes.

Other ranges available...



Sheds, Workshops, Potting Sheds & Greenhouses



Cottage Rooms & Summerhouses



Garden Studios

Quality Garden Rooms

Manufactured and installed by The Malvern Collection Limited. All prices include VAT and delivery to mainland England, Wales and Scotland* up to the Caledonian Canal.

*Restrictions may apply.

MARCH 2023